

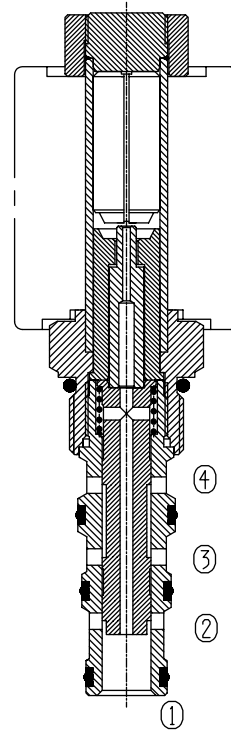
# Four Way Two Position (Spool-type)

BST10-243

## Description of the process

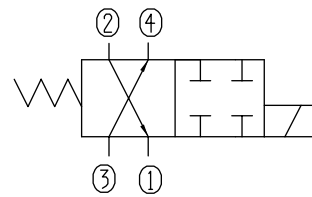
When de-energized, the valve allows flow from ② to ①, and ③ to ④;

When energized, the valve blocks flow to all ports.



|                         |                                   |
|-------------------------|-----------------------------------|
| Specifications:         | 210bar                            |
| Max. Working Pressure   | See Performance                   |
| Flow Max.               | <120ml/min at 210bar              |
| Operating Volt          | 12VDC, 24VDC, 110VAC, 220VAC      |
| Min Voltage Requires    | 85% of normal voltage             |
| Filtration Of Oil       | 20μm or better                    |
| Type of Standard Cavity | T5-3                              |
| Temperature             | -30~+100°C<br>Standard Buna Seals |
| Standard Block Model    | T5-31*/33*/34*/36*                |

Symbol:

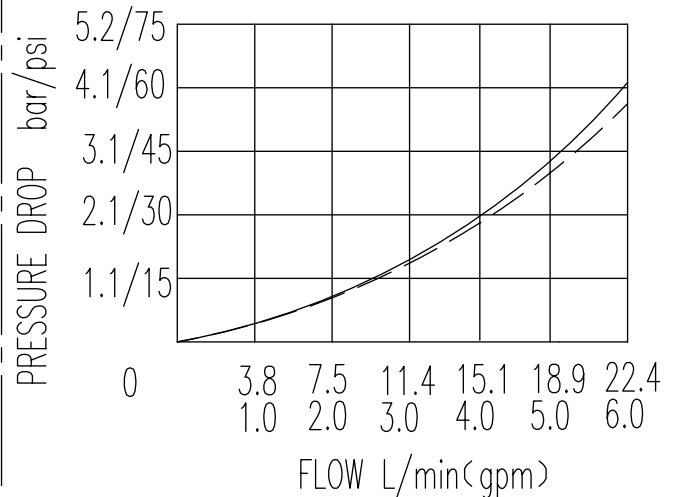


Characteristic:

32 cST Oil/40°C

③ — ④ ———

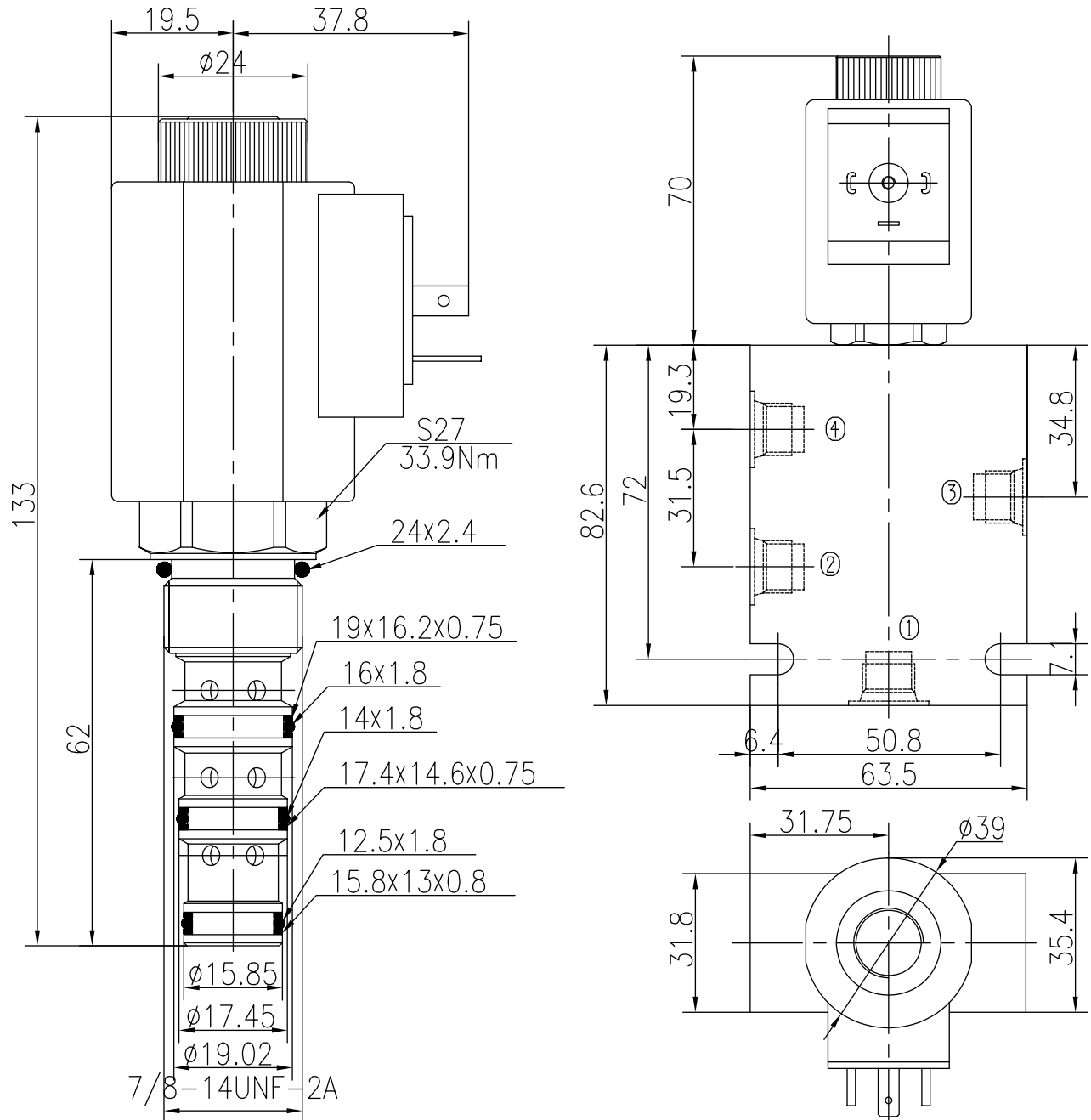
② — ① — - - -



# Four Way Two Position (Spool-type)

BST10-243

Profile dimensions



TO ORDER

BST10-243

Solenoid Valve  
Function

Body Porting

Omit for Cartridge only

G1/4 4G  
G3/8 8G  
SAE4 4T  
SAE6 6T

Seals

Buna(Std.) N

Fluorocarbon V

Voltage

12 12VDC

24 24VDC

110 110VAC

220 220VAC

Connection

DL Double Leads

DH Electrical Outlet