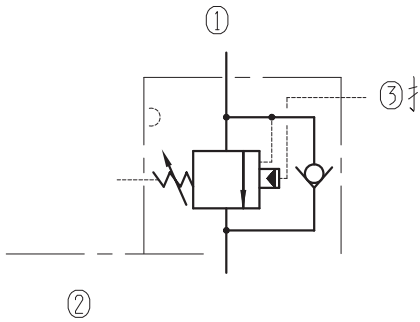


Load Control Valves

BPF12EG-00/X.Y

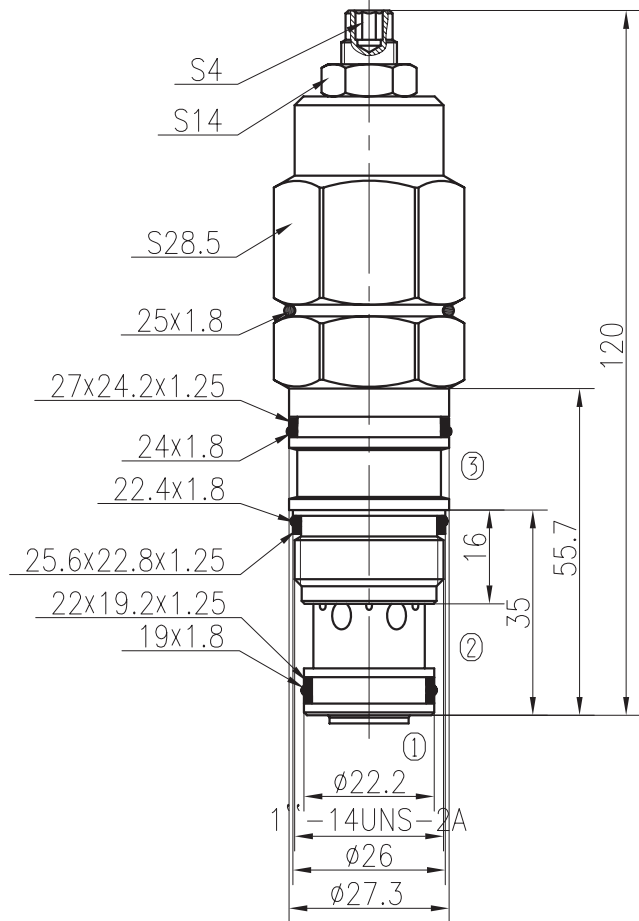


Specifications:

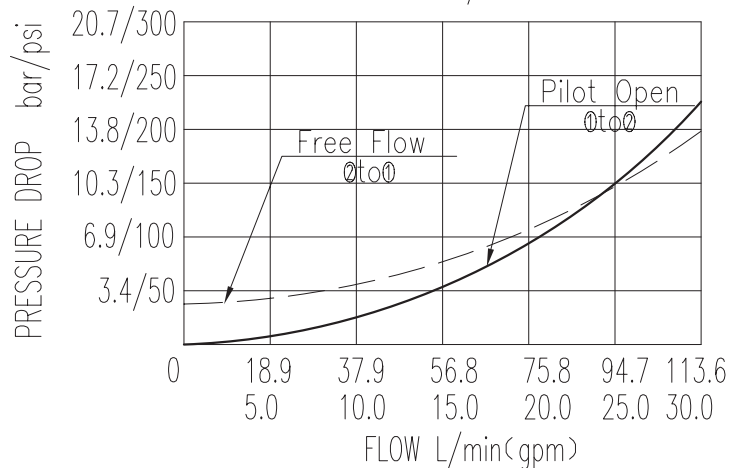
Max.Working Pressure :	320bar
Flow Max :	120L/min
Internal Leakage :	<0.4ml/min
Filtration Of Oil :	25μm or better
Temperature):	-30~+100℃ (Standard Buna Seals)
Cavity :	T-2A
Installation torque :	60~70Nm
Pilot Ratio :	4.5:1

The valve controls moving load and preventing it from running ahead of the pump,locking the load in any position,it also provides static overload and thermal expansion protection.

The valve allows free flow from ② to ① and blocks reverse flow until a pilot pressure proportional to the load pressure is sensed at ③ modulating flow from ②to① .



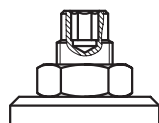
32 cST Oil/45° C



X ADJUSTMENTS

03

Leakproof hex. and socket screw



Y SPRINGS

Y	Press. range bar	Press. increase bar/turn	Standand setting bar	Cracking press. bar
05	70~175		140	125
10	140~420		280	245