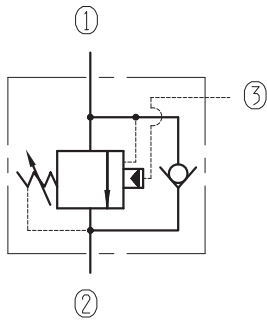


## BPF10-00/X.Y

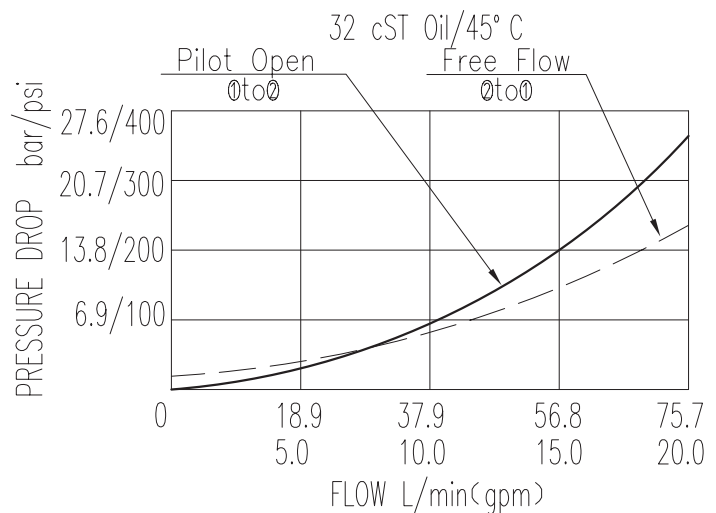
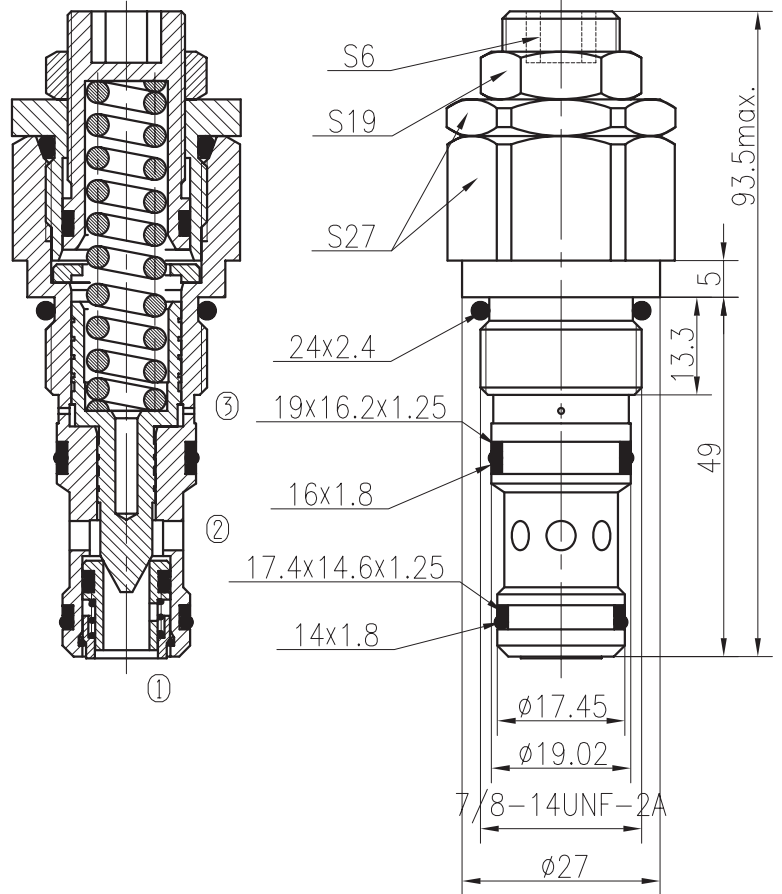


### Specifications:

Max.Working Pressure :	270bar
Flow Max :	60L/min
Internal Leakage :	<0.4ml/min
Filtration Of Oil :	25μm or better
Temperature :	-30~+100℃ (Standard Buna Seals)
Cavity :	T-3304
Installation torque :	33.9~36.7Nm
Pilot Ratio :	4.0:1

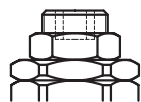
The valve controls moving load and preventing it from running ahead of the pump, locking the load in any position, it also provides static overload and thermal expansion protection.

The valve allows free flow from ② to ① and blocks reverse flow until a pilot pressure proportional to the load pressure is sensed at ③ modulating flow from ② to ①.



### X ADJUSTMENTS

03 Leakproof hex. and socket screw



### Y

### SPRINGS

	Press. range bar	Press. increase bar/turn	Standand setting bar	Cracking press. bar
05	10~105	22	80	60
10	34~210	38	160	130
15	65~350	64	250	200