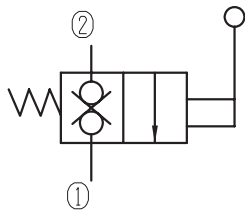
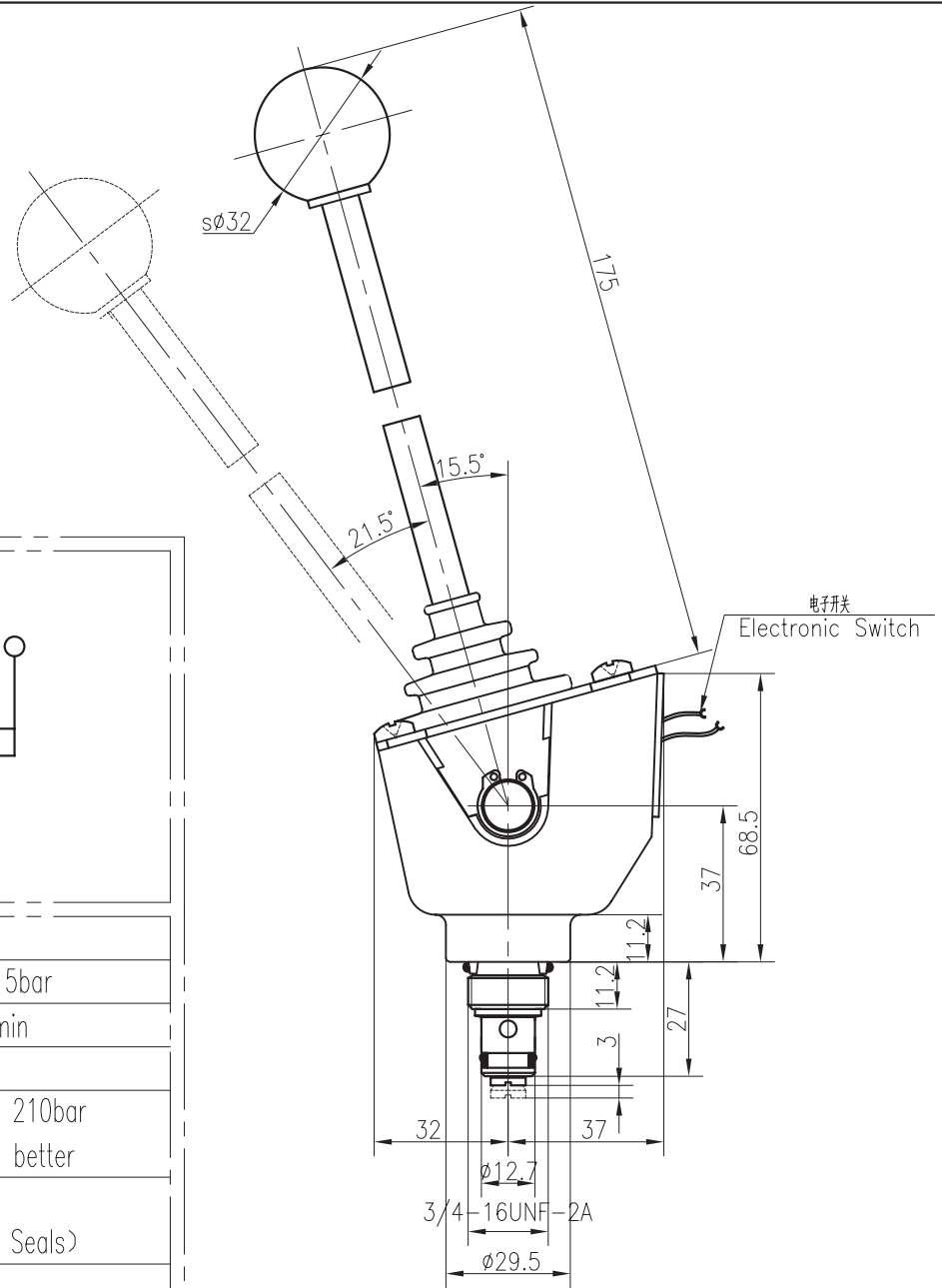


Manual Operated Directional Valves

BSHF06-227E-02/X.Y



Specifications:

Max working Pressure : 315bar

Flow Max : 30L/min

Internal Leakage :

≤0.3ml/min at 210bar

Filtration Of Oil : 25μm or better

Temperature : -30~+110℃

(Standard Buna Seals)

Cavity : T4-1

Installation torque : 24.5~27.2Nm

X	PORTING	Y	SEALS
0	Cartridge Only	N	Buna
4G	G1/4	V	Fluor.
8G	G3/8		
4T	SAE4		
6T	SAE6		

