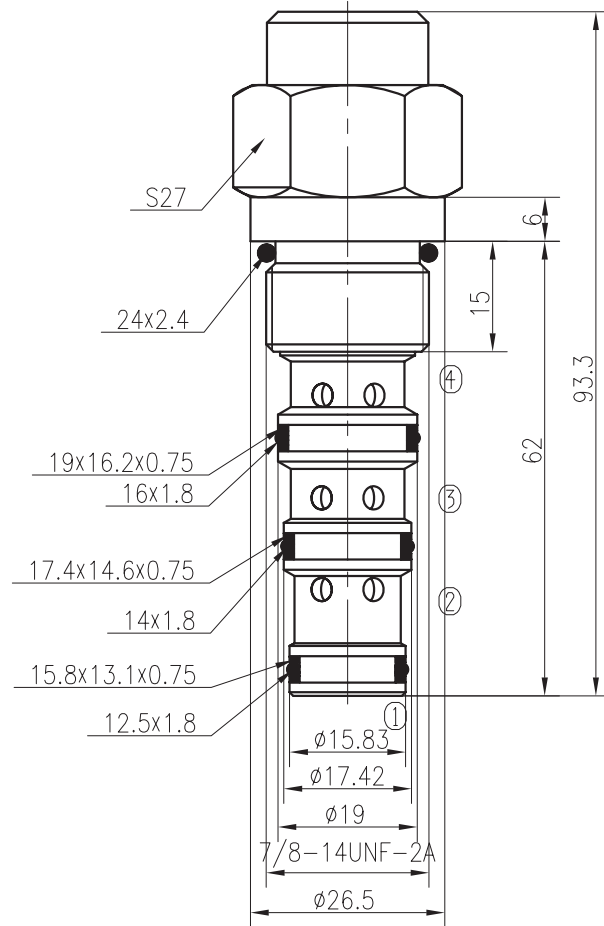
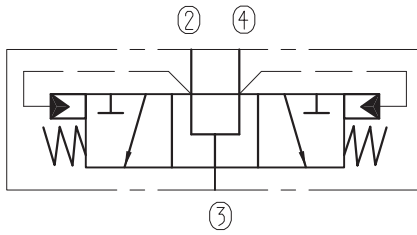


Hydraulic Operated Directional Valves

BYHF10-33LC/X.Y.Z



Specifications:

Max working Pressure : 350bar

Flow Max : 25L/min

Internal Leakage : $\leq 80\text{ml/min}$ at 210bar

Filtration Of Oil : $25\mu\text{m}$ or better

Temperature : $-30\sim+100^{\circ}\text{C}$
(Standard Buna Seals)

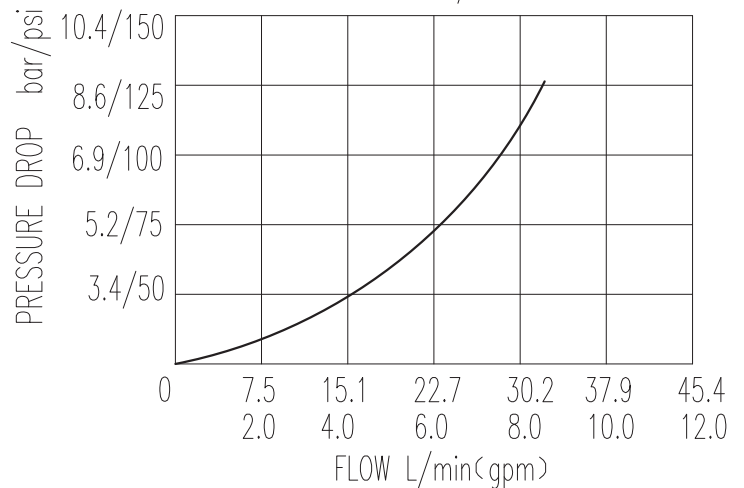
Cavity : T5-3

Installation torque : 33.9~36.7Nm

In neutral state(unpiloted),the valve allows flow from ②to③ bidirectionally.When pilot port ④ is applied sufficient pressure the valve allows flow from ② to ③ and block flow from ③to② bidirectionally.

Back pressure at ④ will increase the pilot pressure required at ④ to shift at a ratio 1:1.

32 cST Oil/45° C



X	PORTING	Y	SEALS
0	Cartridge Only	N	Buna
4G	G1/4	V	Fluor.
8G	G3/8		
4T	SAE4		
6T	SAE6		

Z	SPRINGS	
	Full Shift Pressure bar	Full Shift Pressure bar
05	3.2	
10	6.3	
15	11.4	