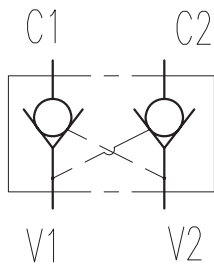


Dual Pilot-to-Open Check Valves

BFYYS20-02/X.Y.Z



Specifications:

Max working Pressure : 207/350bar

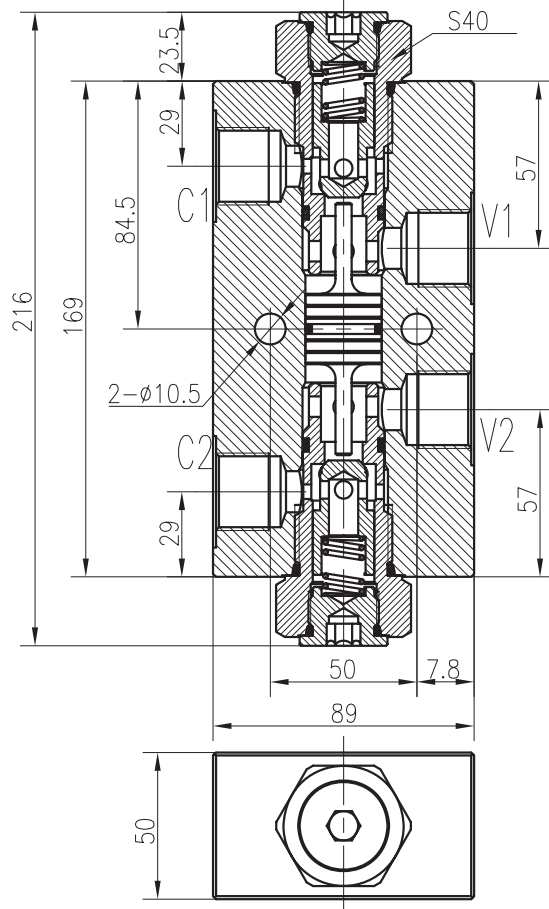
Flow Max : 100L min /

C2toV2 and C1toV1(Internal Leakage) :
 $\leq 0.3\text{ml/min}$ at 210bar

Filtration Of Oil : $25\mu\text{m}$ or better

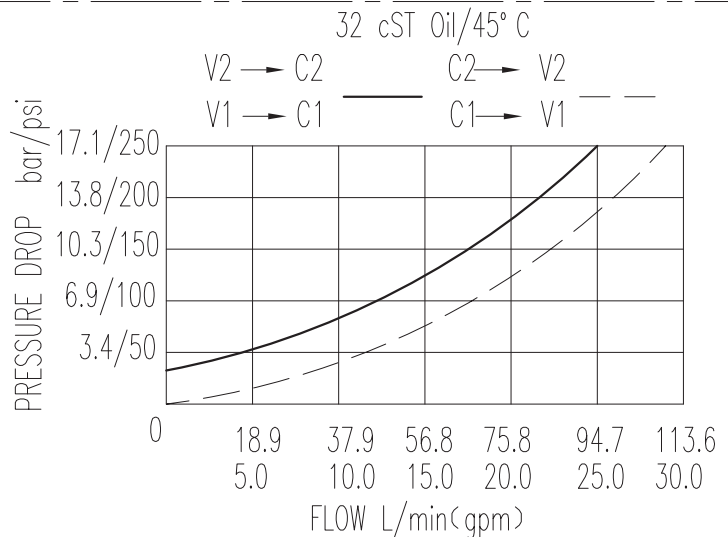
Temperature : $-30\sim+100^{\circ}\text{C}$
 (Standard Buna Seals)

Body Material : Al Lc4/Steel 45



The valve blocks flow from C1 to V1, and from C2 to V2.
 Flow is allowed in the opposite direction when pressure is applied to port V1 and/or port V2.

The valve has a 4.0:1 pilot ratio, so at least 1/4.0 of the load pressure at port C1 or C2 is required at the pilot port V1 or V2 to open the flow to allow from port C1 to V1 or C2 to V2.



X	PORTING MATERIAL		Y	SEALS
5GA	Lc4	G3/4	N	Buna
12TA		SAE12	V	Fluor.
5GS	Steel 45	G3/4		
12TS		SAE12		

Z	SPRINGS	
	Cracking Pressure bar	Cracking Pressure bar
05	2	
10	7	