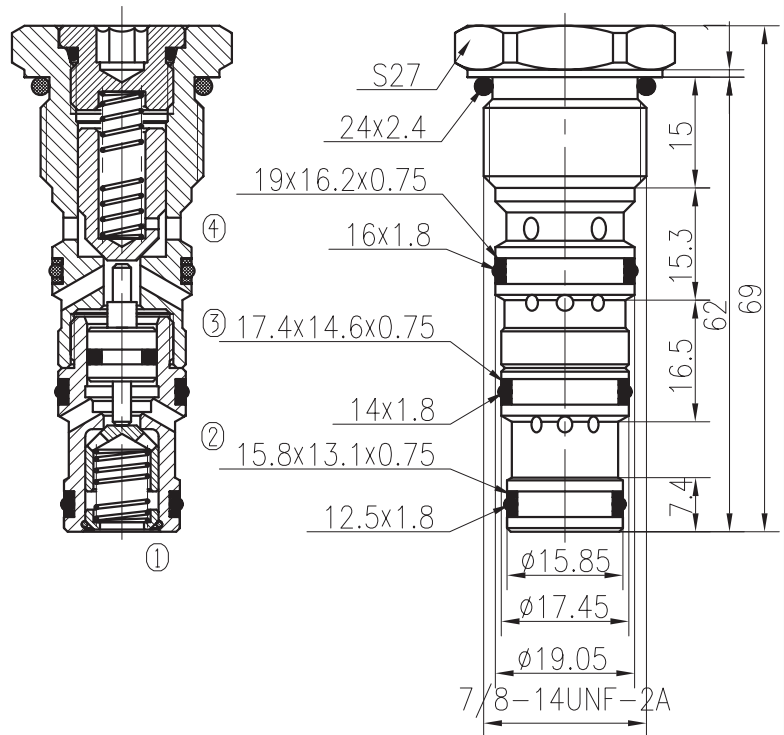
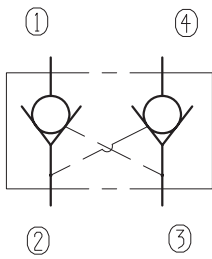


Dual Pilot-to-Open Check Valves

BYYS10-00/X.Y.Z

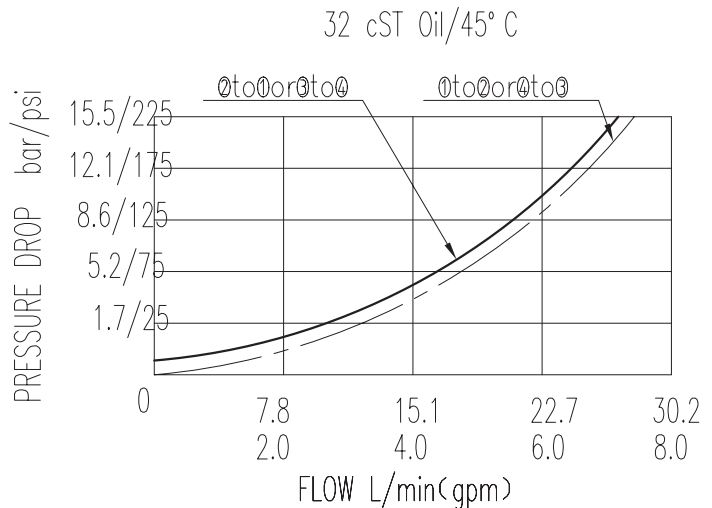


Specifications:

Max working Pressure :	240bar
Flow Max :	30L/min
Internal Leakage :	$\leq 0.3\text{ml/min}$ at 210bar
Filtration Of Oil :	25 μm or better
Temperature :	-30~+100 $^{\circ}\text{C}$ (Standard Buna Seals)
Cavity :	T5-3
Installation torque :	33.9~36.7Nm
Standard Block Model	T5-31*/33*/34*36*

The valve blocks flow from ① to ②, and from ③ to ④. Flow is allowed in the opposite direction when pressure is applied to port ② and/or port ④.

The valve has a 2.5:1 pilot ratio, so at least 1/2.5 of the load pressure at port ② or ④ is required at the pilot port ① or ③ to open the flow to allow from port ③ to ④ or port ① to ②.



X	PORTING	Y	SEALS
0	Cartridge Only	N	Buna
4G	G1/4	V	Fluor.
8G	G3/8		
4T	SAE4		
6T	SAE6		

Z	SPRINGS	
	Pilot Ratio	Cracking Pressure bar
05	2.5:1	1.1
10	3.6:1	
15	4:1	