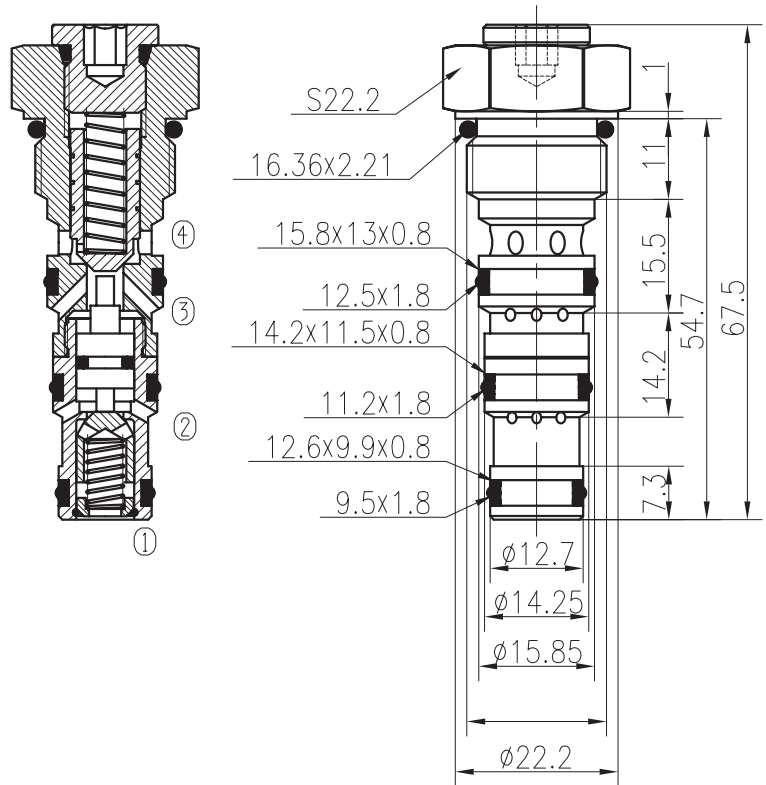
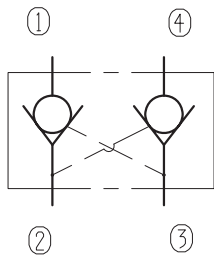


# Dual Pilot-to-Open Check Valves

BYYS08-00/X.Y.Z

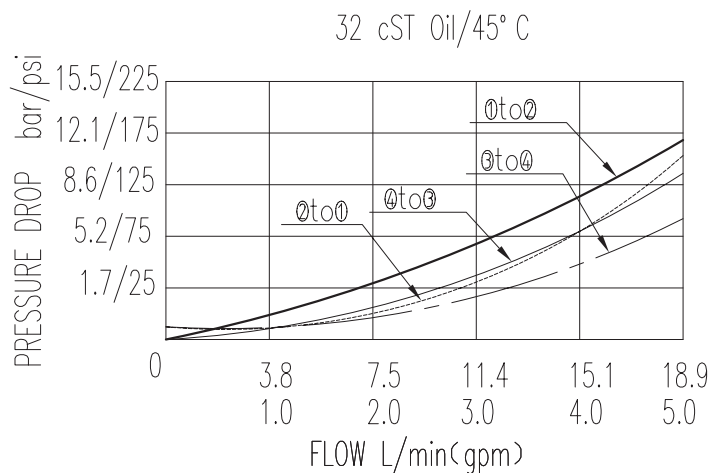


## Specifications:

Max working Pressure :	240bar
Flow Max :	18L/min
①to②and①to③(Internal Leakage ):	<0.3ml/min at 210bar
Filtration Of Oil :	25μm or better
Temperature :	-30~+100℃ (Standard Buna Seals)
Cavity :	T4-3
Installation torque :	24.5~27.2Nm
Standard Block Model	T4-31*/33*/34*/36*

The valve blocks flow from ① to ②, and from ① to ③. Flow is allowed in the opposite direction when pressure is applied to port ④ and/or port ②.

The valve has a 2.5:1 pilot ratio, so at least 1/2.5 of the load pressure at port ② or ③ is required at the pilot port ④ or ② to open the flow to allow from port ① to ② or port ① to ③.



X	PORTING	Y	SEALS
0	Cartridge Only	N	Buna
4G	G1/4	V	Fluor.
8G	G3/8		
4T	SAE4		
6T	SAE6		

Z	SPRINGS)	
	Pilot Ratio	Cracking Pressure bar
05	2.5:1	0.4
10	3.5:1	