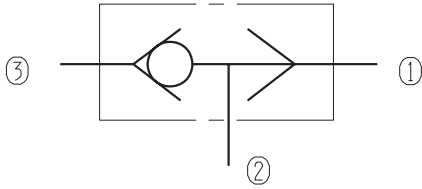


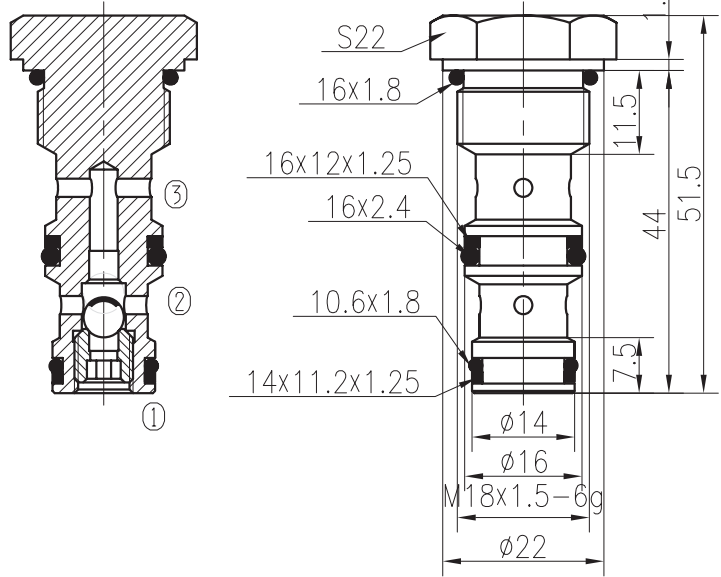
Shuttle Valves

BSF06-01/X.Y



Specifications:

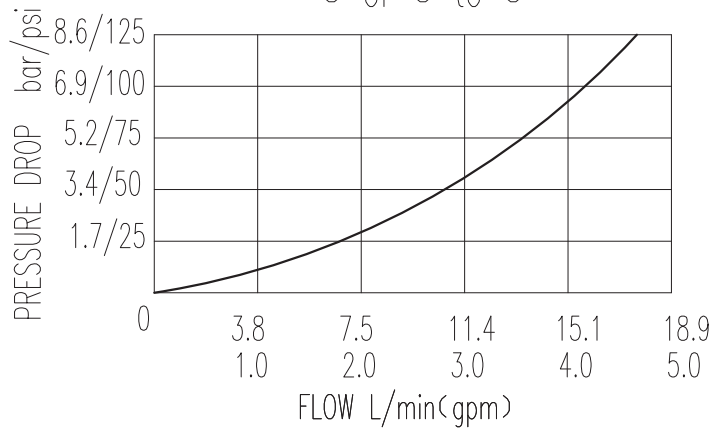
Max working Pressure :	240bar
Flow Max :	15L/min
Internal Leakage :	<0.3ml/min at 210bar
Filtration Of Oil :	25μm or better
Temperature :	-30~+100℃ (Standard Buna Seals)
Cavity :	T4-S2
Installation torque :	24.5~27.2Nm



The valve allows flow from the higher pressure of ① or ③ port to the ② port, while block the lower pressure port.

The valve is commonly used to direct oil from the pressure side of a bidirectional hydraulic motor to a pressure-released hydraulic brake.

32 cST Oil/45° C
① or ③ to ②



X	PORTING	Y	SEALS
0	Cartridge Only	N	Buna
		V	Fluor.

Z	SPRINGS	
	Cracking Pressure bar	Cracking Pressure bar