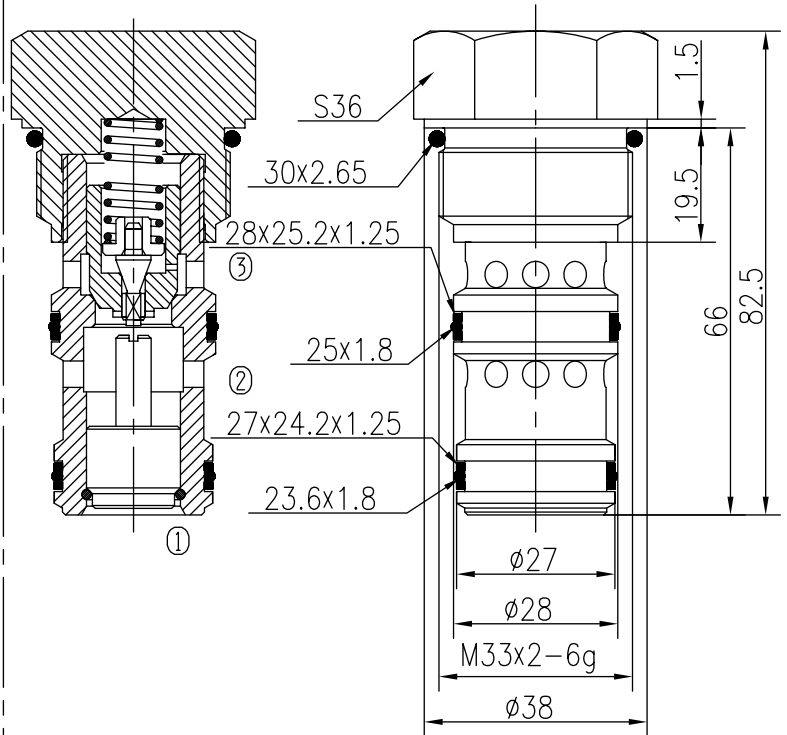
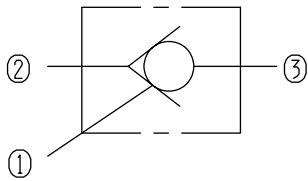


# Hydraulic Operated Check Valves (Poppet-type)

BYDF12-00/X.Y.Z



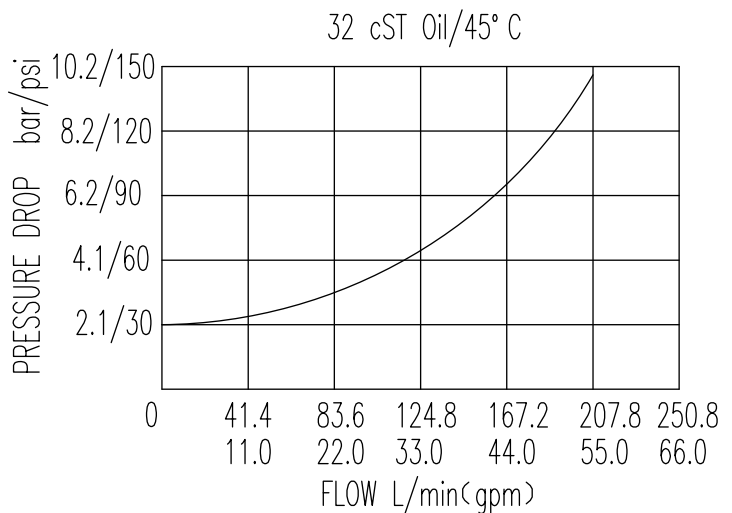
## Specifications:

Max working Pressure :	315bar
Flow Max :	200L/min
Internal Leakage :	<0.3ml/min at 210bar
Filtration Of Oil :	25μm or better
Temperature :	-30~+100℃ (Standard Buna Seals)
Cavity :	T7-S2
Installation torque :	62.6~73.4Nm

The valve allows flow from ② to ③ with very low pressure drop, while blocks flow from ③ to ②.

The valve blocks flow from ③ to ② until sufficient pressure is applied at ①.

The valve has a 16:1 pilot ratio, meaning that at least 1/16 of the load pressure held at ③ is required at ① to open the valve.



X	PORTING	Y	SEALS
0	Cartridge Only	N	Buna
		V	Fluor

Z	SPRINGS	
	Cracking Pressure bar	Cracking Pressure bar
05	2	
10	3	
15	6	