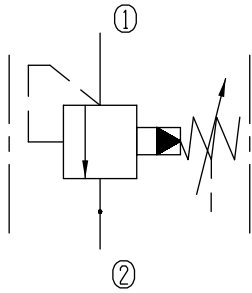


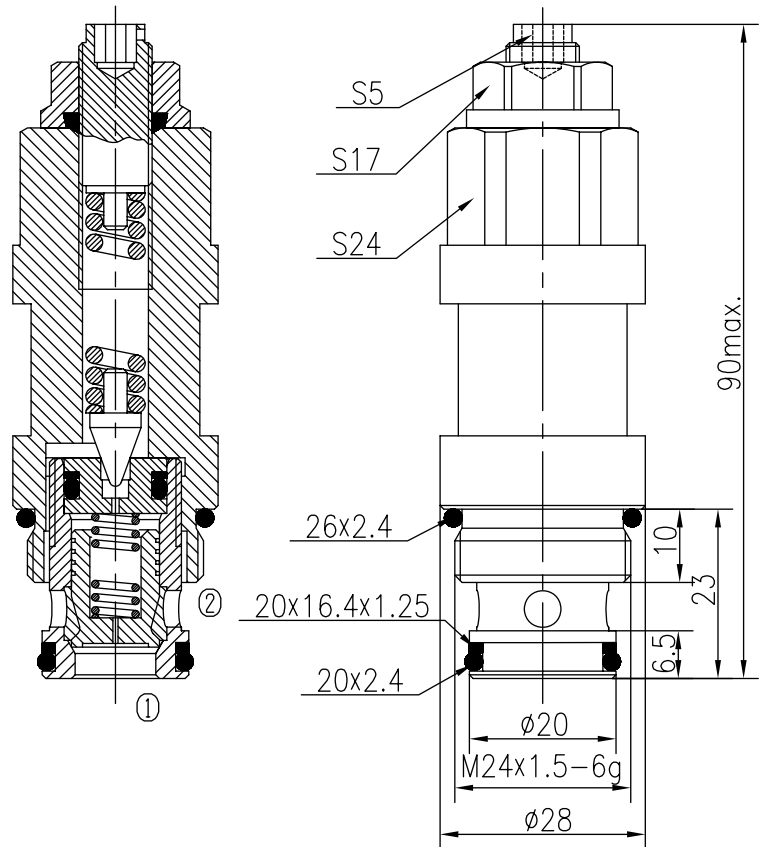
Pilot-operated Relief Valves (Poppet-type)

BXYF10-01/X.Y

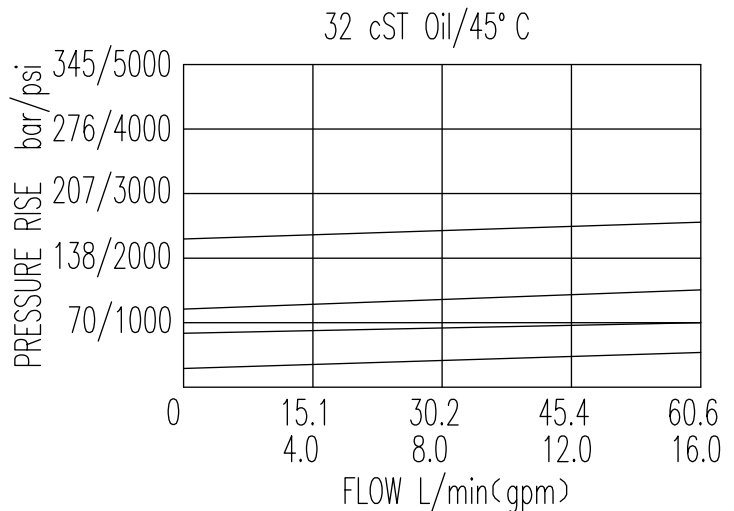


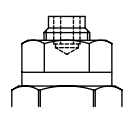
Specifications:

| | |
|------------------------|---|
| Max working Pressure : | 315bar |
| Flow Max : | 60L/min |
| Internal Leakage : | <30ml/min (85% of Setting Pressure at 30L/min) |
| Filtration Of Oil : | 25µm or better |
| Temperature : | -30~+100℃ (Standard Buna Seals) |
| Cavity : | T-2301(See Page 7.1.9) |
| Installation torque : | 38.7~43.8Nm |



The valve blocks flow from ① to ② until 90% pressure is present at ①. With the continued increase pressure on ①, ① to ② began to overflow, until to the spring's maximum pressure.



| X | ADJUSTMENTS | |
|----|----------------------------------|---|
| 03 | Looseproof hex. and socket screw |  |

| Y | SPRINGS | | | |
|----|------------------|--------------------------|----------------------|---------------------|
| | Press. range bar | Press. increase bar/turn | Standard setting bar | Cracking press. bar |
| 05 | 1~50 | 13 | 35 | 27 |
| 15 | 60~150 | 47 | 120 | 105 |
| 20 | 130~315 | 127 | 175 | 157 |