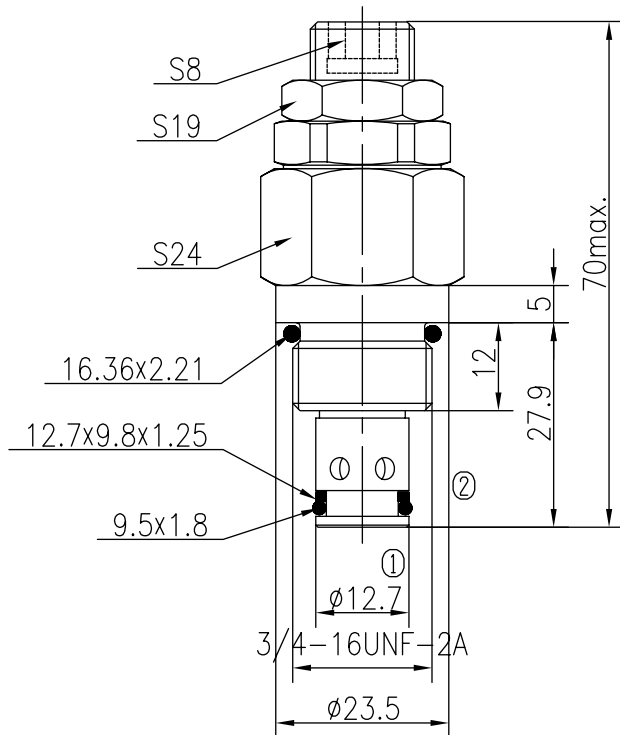
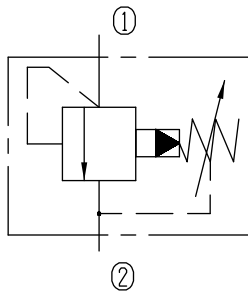


Pilot-operated Relief Valves (Spool-type)

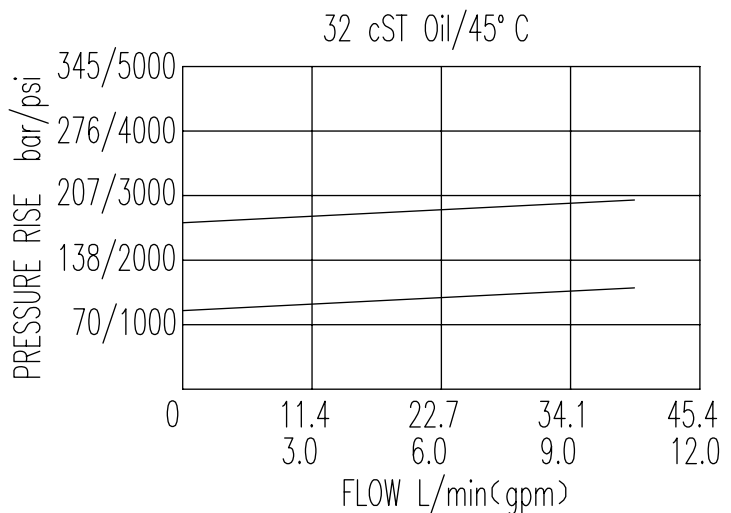
BXYF08-02/X.Y

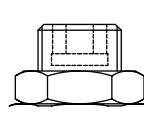


Specifications:

Max working Pressure :	350bar
Flow Max :	35L/min
Internal Leakage :	<80ml/min (85% of Setting Pressure at 30L/min)
Filtration Of Oil :	25μm or better
Temperature :	-30~+100℃ (Standard Buna Seals)
Cavity :	T4-1 (See Page 7.1.1)
Installation torque :	24.5~27.2Nm

The valve blocks flow from ① to ② until 90% pressure is present at ①. With the continued increase pressure on ①, ② to ① began to overflow, until to the spring's maximum pressure.



X	ADJUSTMENTS	
03	Leakproof hex. and socket screw	

Y	SPRINGS			
	Press. range bar	Press. increase bar/turn	Standard setting bar	Cracking press. bar
05	3.5~105		100	85
10	10~210		200	180
15	30~350		200	180