

Four Way Three Position (Spool-type)

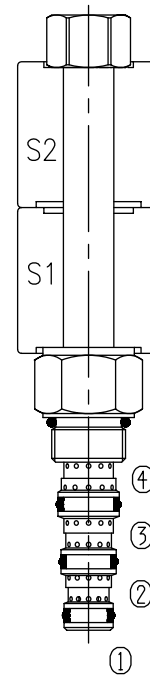
BST08-34H

Description of the process

When de-energized, the valve allows flow to all ports;

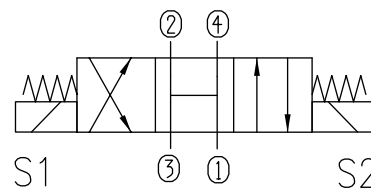
When S1 is energized, the valve allows flow between ③ to ④, as well as ② to ①.

When S2 is energized, the valve allows flow between ③ to ②, as well as ④ to ①.

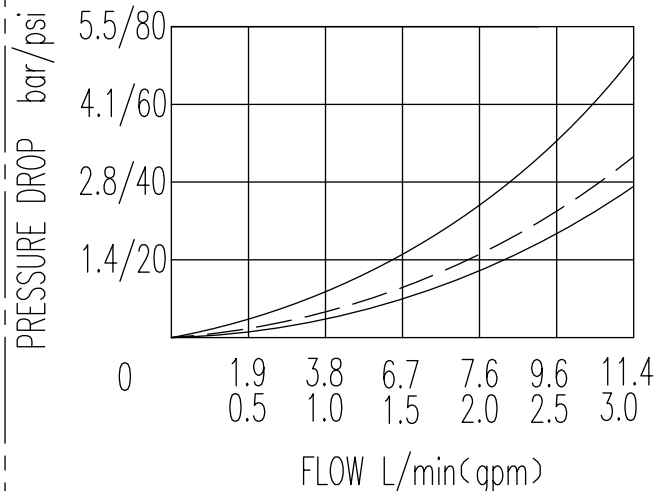
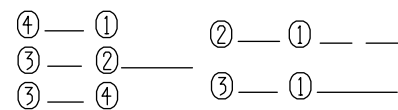


Specifications:	210bar
Max. Working Pressure	See Performance
Internal Leakage	<160ml/min at 210bar
Operating Volt	12VDC, 24VDC, 110VAC, 220VAC
Min Voltage Requires	85% of normal voltage
Filtration Of Oil	20μm or better
Type of Standard Cavity	T4-3
Temperature	-30~+100℃ Standard Buna Seals
Standard Block Model	T4-31*/33*/34*/36*

Symbol:



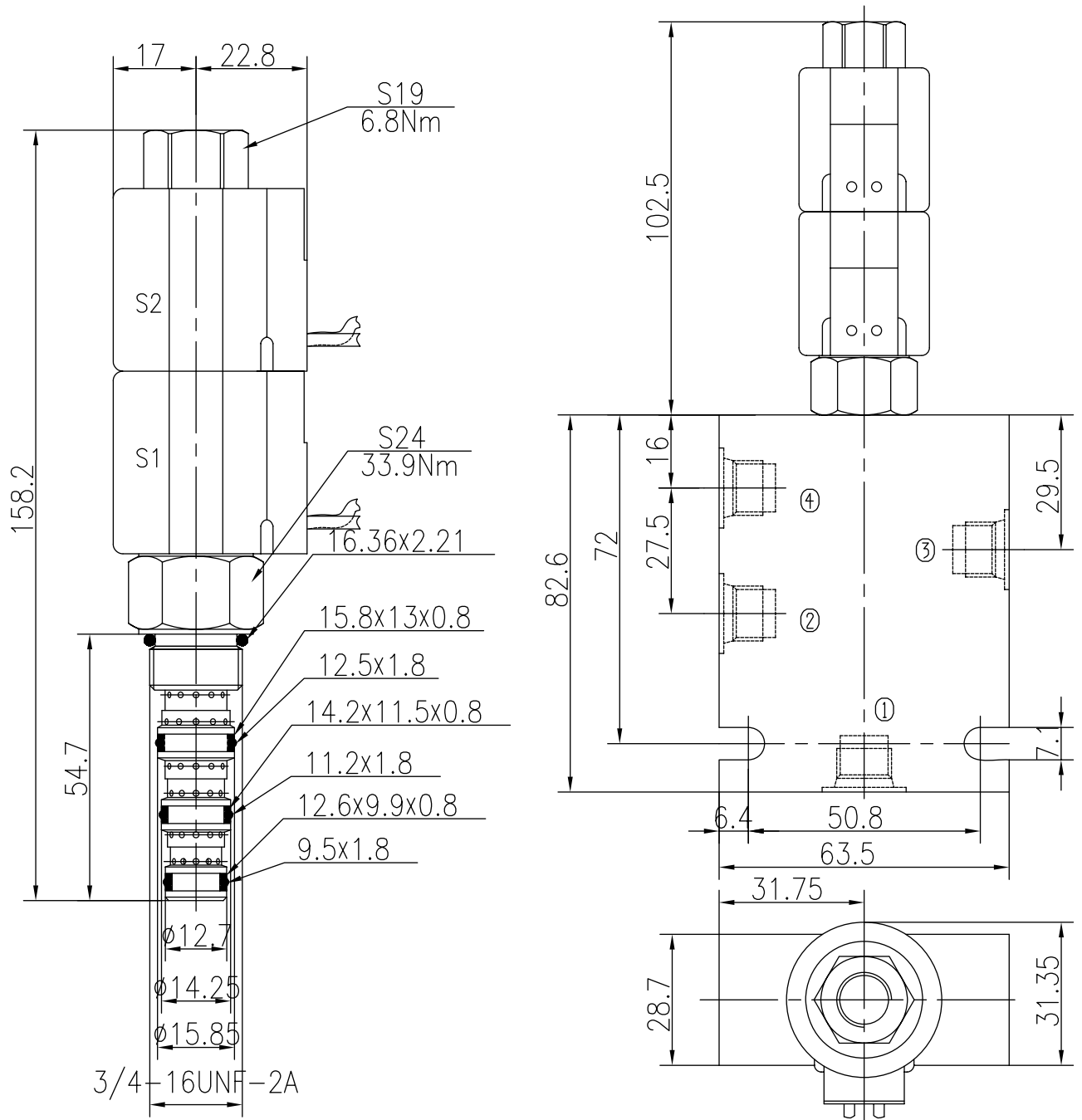
Characteristic: 32 cST Oil/40°C



Four Way Three Position (Spool-type)

BST08-34H

Profile dimensions



TO ORDER

BST08 -34H

Solenoid Valve
Function

Body Porting

Omit for Cartridge only

- G1/4 4G
- G3/8 8G
- SAE4 4T
- SAE6 6T

Seals

Buna(Std.)

Fluorocarbon

Voltage

- 12 12VDC
- 24 24VDC
- 110 110VAC
- 220 220VAC

Connection

- DL Double Leads
- DH Electrical Outlet