

# Three Way Two Position (Spool-type)

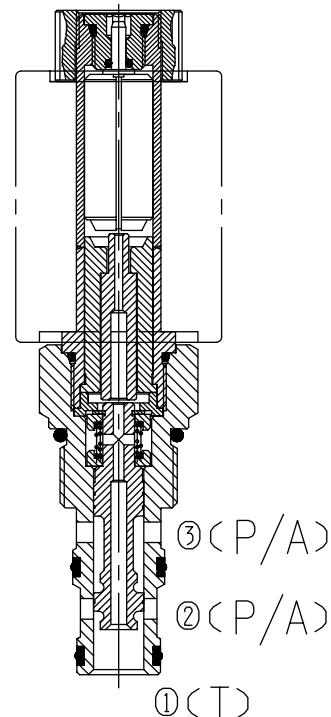
BST10-232

## Description of the process

When de-energized, the valve allows flow from ② to ①, while blocking flow at ③;

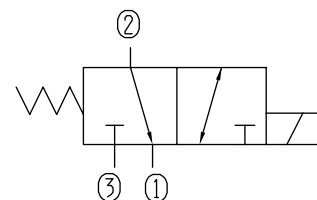
When energized, the valve allows flow from ③ to ②, while blocking flow at ①.

P---(PRESSURE PORT)  
A---(WORKING PORT)  
T---(TANK PORT)



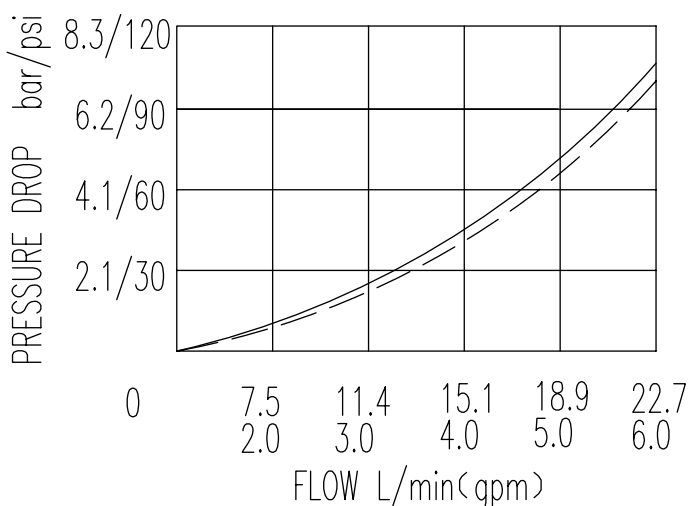
|                         |                                  |
|-------------------------|----------------------------------|
| Specifications:         | 210bar                           |
| Max. Working Pressure   | See Performance                  |
| Flow Max.               | <80ml/min at 210bar              |
| Operating Volt          | 12VDC, 24VDC, 110VAC, 220VAC     |
| Min Voltage Requires    | 85% of normal voltage            |
| Filtration Of Oil       | 20μm or better                   |
| Type of Standard Cavity | T5-2                             |
| Temperature             | -30~+100℃<br>Standard Buna Seals |
| Standard Block Model    | T5-21*/23*/24*/26*               |

Symbol:



Characteristic: 32 cST Oil/40°C

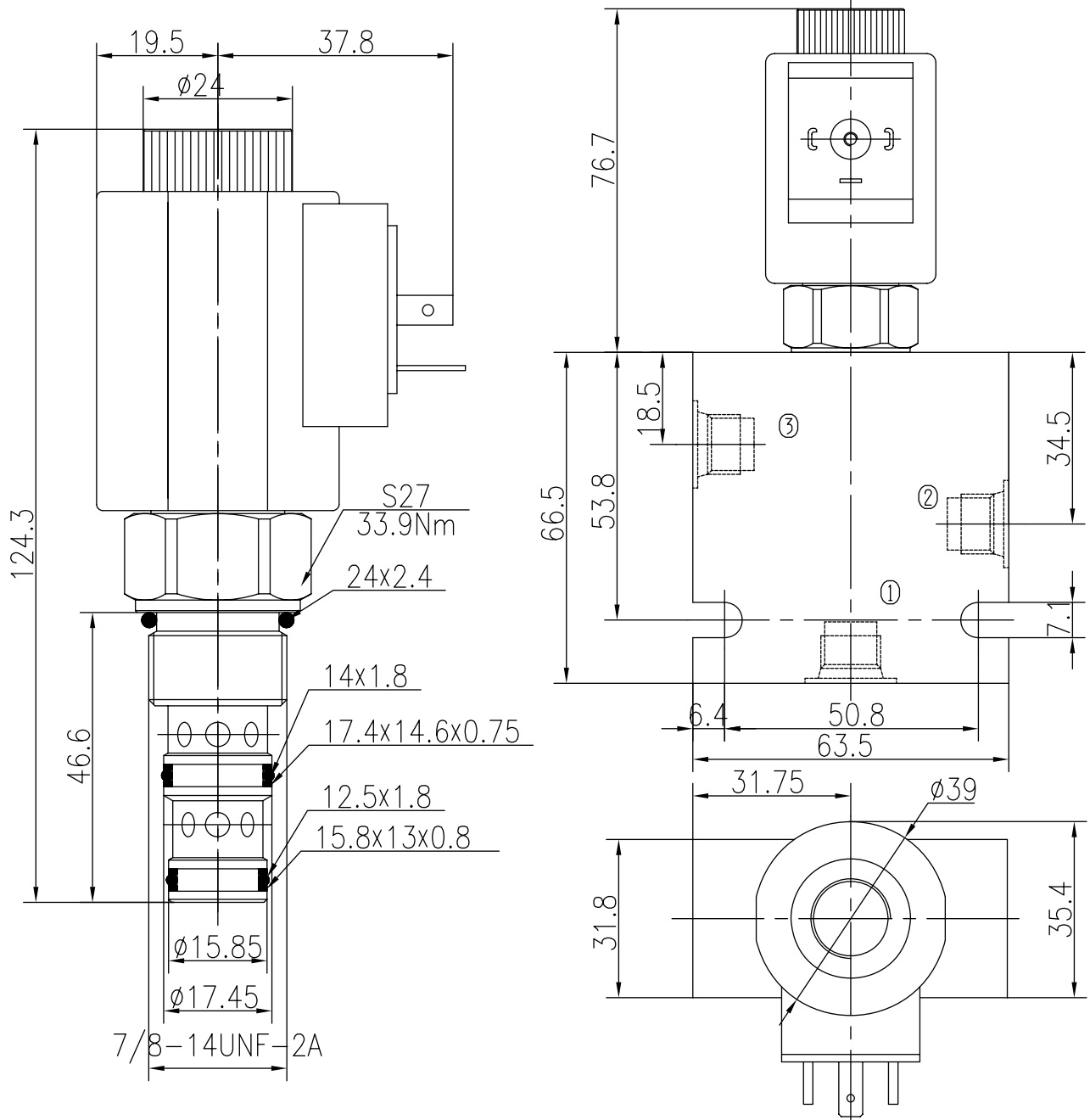
②—①—(d)  
③—②—(e)



# Three Way Two Position ( Spool-type)

BST10-232

Profile dimensions



TO ORDER

BST10-232

Solenoid Valve  
Function

Body Porting

Omit for Cartridge only

G1/4 4G  
G3/8 8G  
SAE4 4T  
SAE6 6T

Seals

Buna(Std.) N

Fluorocarbon V

Voltage

12 12VDC  
24 24VDC  
110 110VAC  
220 220VAC

Connection

DL Double Leads  
DH Electrical Outlet