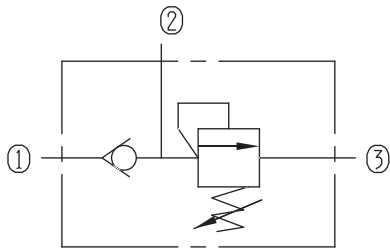


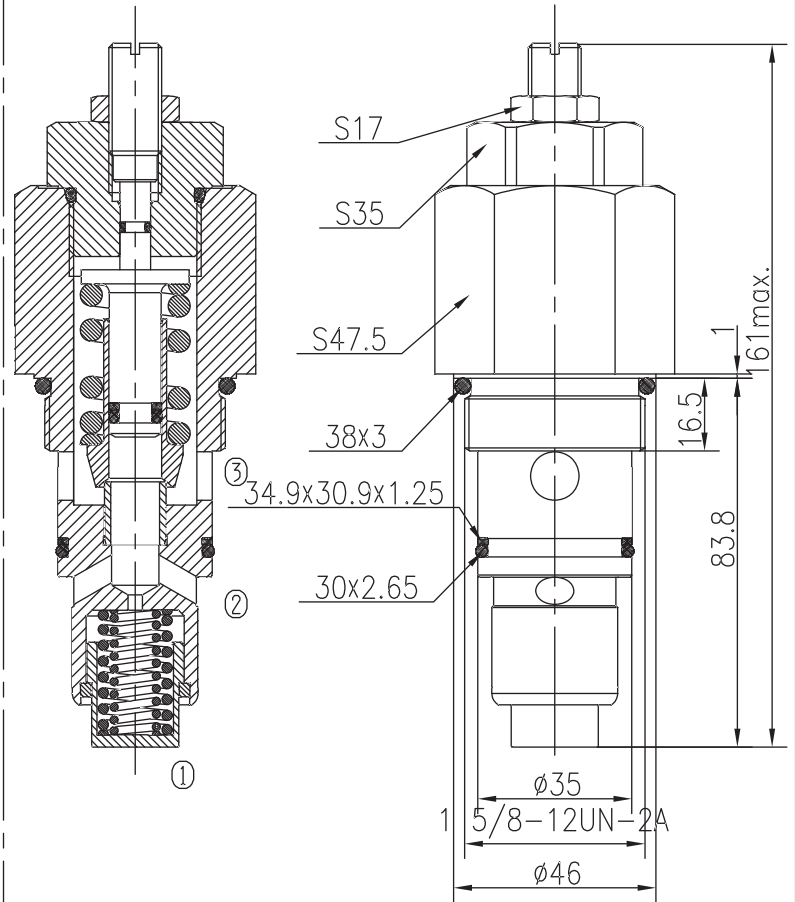
# Combined Relief Valves (Poppet-type)

BZYF25-01/X.Y

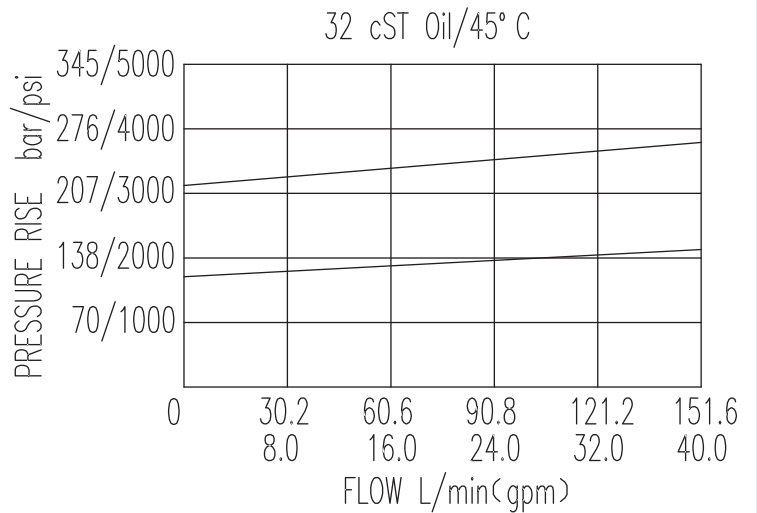


## Specifications:

Max working Pressure :	250bar
Flow Max :	150L/min
Internal Leakage :	<30ml/min (80% of Setting Pressure at 40L/min)
Filtration Of Oil :	25μm or better
Temperature :	-30~+100℃ (Standard Buna Seals)
Cavity :	T-2502
Installation torque :	110~120Nm
Reverse Cracking Pressure :	
①→②:	13~16bar



The valve blocks flow from ① to ② until 85% pressure is present at ①. With the continued increase pressure on ①, ①P to ② began to overflow, until to the spring's maximum pressure.



X	ADJUSTMENTS	
03	Groove and socket screw	

Y	SPRINGS			
	Press. range bar	Press. increase bar/turn	Standard setting bar	Cracking press. bar
05	70~195		145	127
10	145~280		250	210