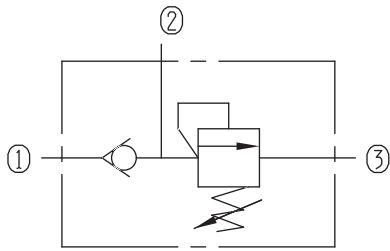


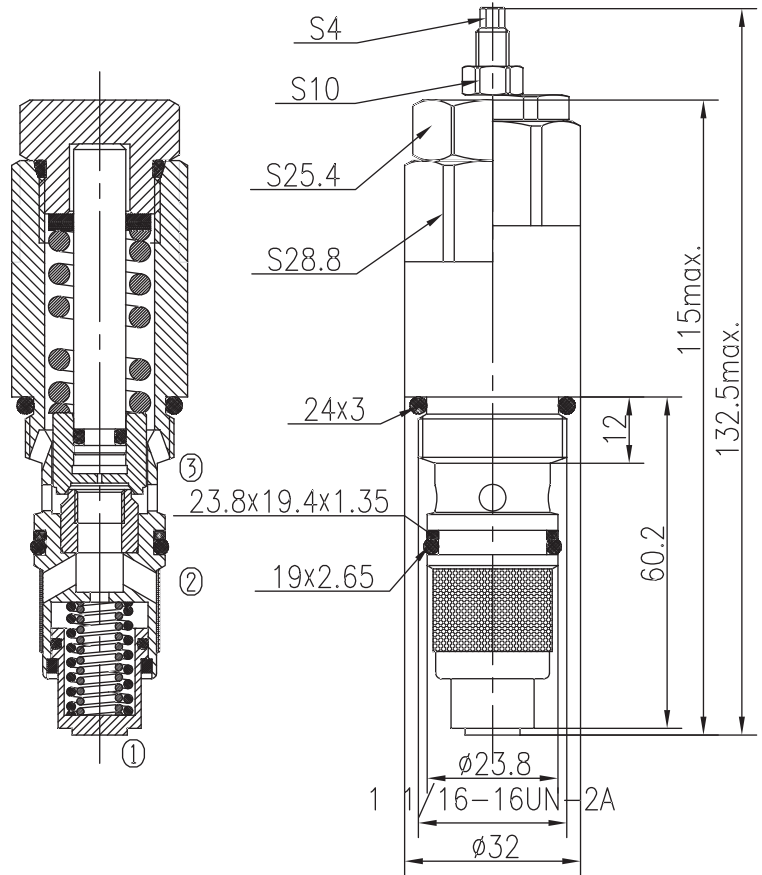
# Combined Relief Valves (Poppet-type)

BZYF15-01/X.Y



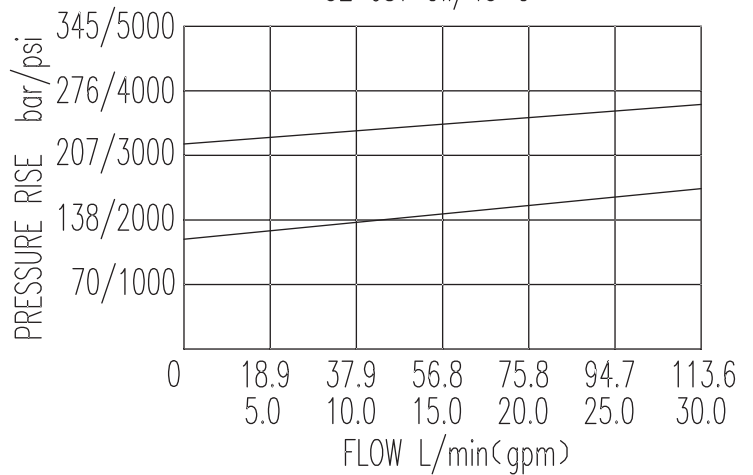
## Specifications:

Max working Pressure :	280bar
Flow Max :	100L/min
Internal Leakage :	<30ml/min (80% of Setting Pressure at 40L/min)
Filtration Of Oil :	25µm or better
Temperature :	-30~+100℃ (Standard Buna Seals)
Cavity :	T-2501
Installation torque :	44.9~50.3Nm
Reverse Cracking Pressure :	
①→②:	12~15bar



The valve blocks flow from ① to ② until 85% pressure is present at ②. With the continued increase pressure on ①, ①P to ② began to overflow, until to the spring's maximum pressure.

32 cST Oil/45° C



X	ADJUSTMENTS	
03	S4 Extended hex. and socket screw	
05	Factory Preset Lockwire Holse	

Y	SPRINGS			
	Press. range bar	Press. increase bar/turn	Standard setting bar	Cracking press. bar
05	70~202	39	160	127
10	140~280	55	250	210