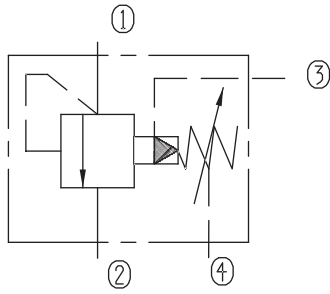


Remote Control Relief Valves (Poppet-type)

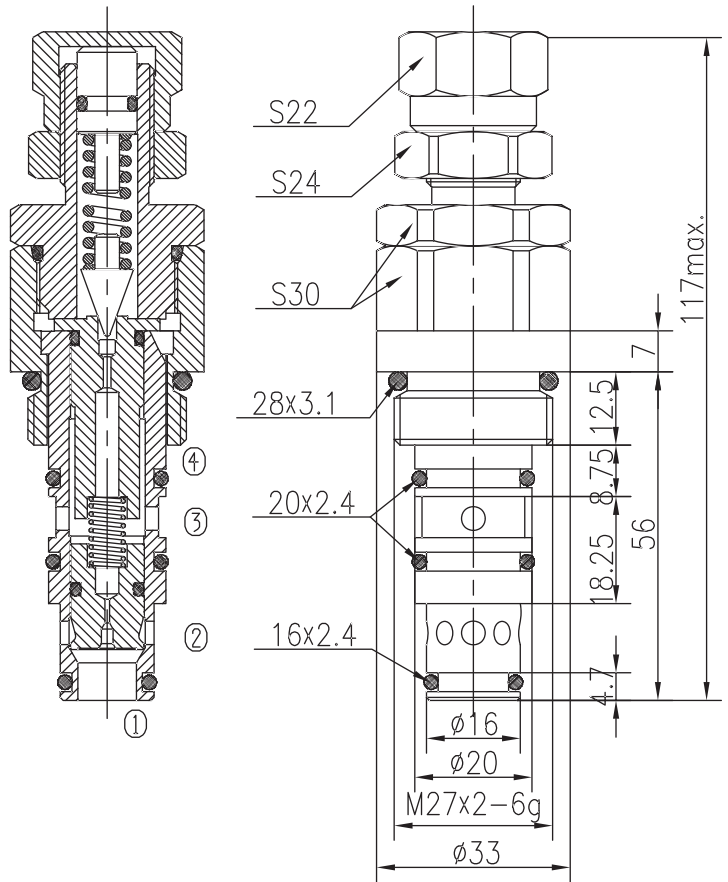


BYYF12-01/X.Y

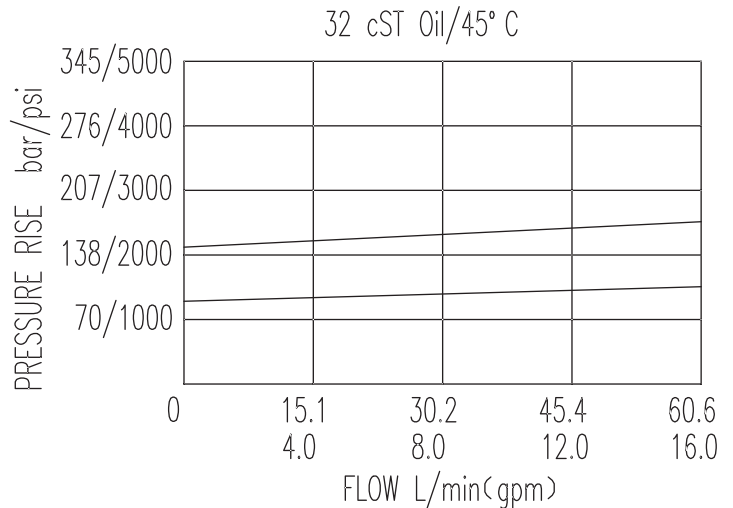


Specifications:

Max working Pressure :	230bar
Flow Max :	60L/min
Internal Leakage :	<30ml/min (85% of Setting Pressure at 30L/min)
Filtration Of Oil :	25 μ m or better
Temperature :	-30~+100 $^{\circ}$ C (Standard Buna Seals)
Cavity :	T-2601
Installation torque):	44.9~50.3Nm



The valve blocks flow from ① to ② until 90% pressure is present at ①. With the continued increase pressure on ①, ① to ② began to overflow, until to the spring's maximum pressure.



X	ADJUSTMENTS	
03	Handnob with Lock Nut	

Y	SPRINGS			
	Press. range bar	Press. increase bar/turn	Standard setting bar	Cracking press. bar
05	10~108	45	100	86
10	20~230	86	160	140