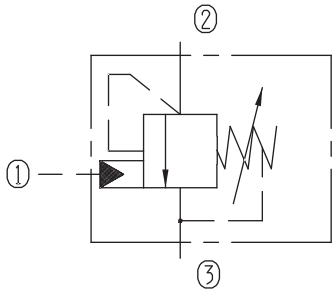


Remote Control Relief/Unloading Valves (Ball-type)

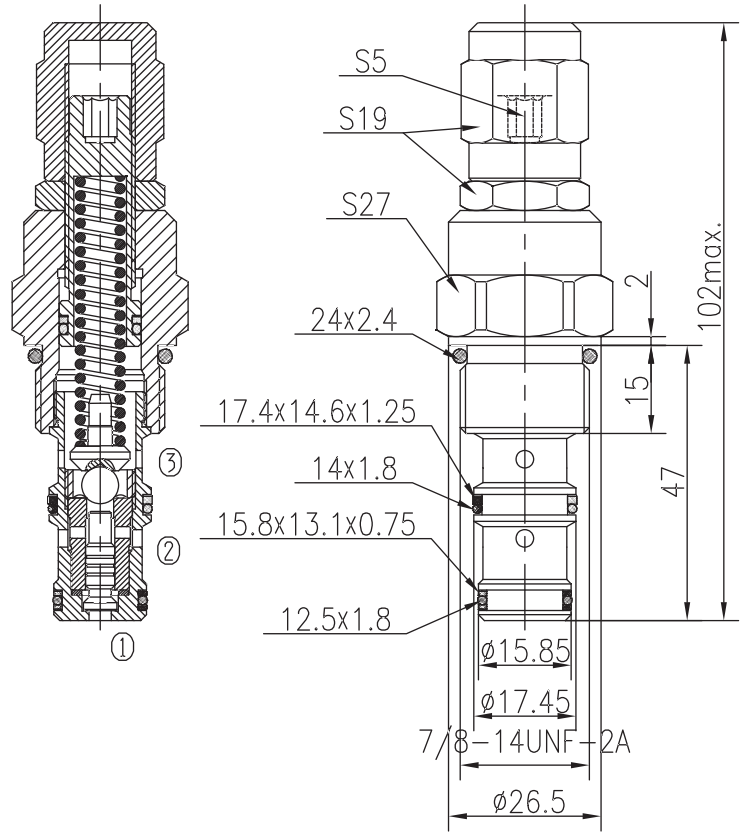


BYYF10-00/X.Y

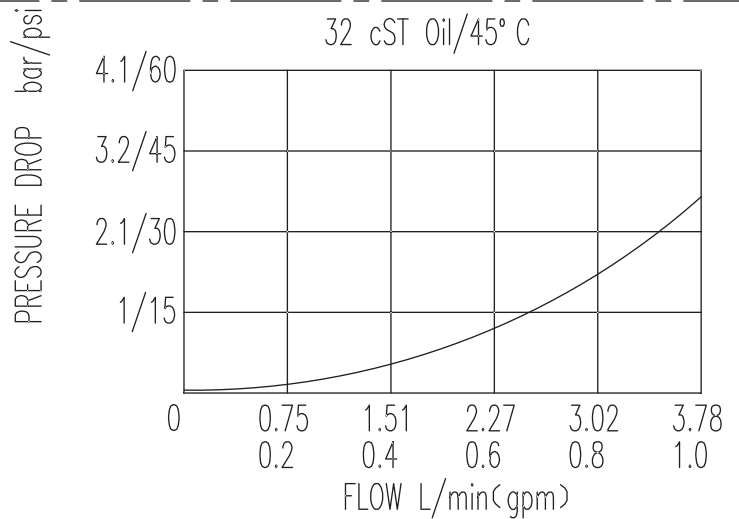


Specifications:

Max working Pressure :	210bar
Flow Max :	4L/min
Internal Leakage :	<30ml/min (80% of Setting Pressure at 2L/min)
Filtration Of Oil :	25µm or better
Temperature :	-30~+100°C (Standard Buna Seals)
Cavity :	T5-2
Installation torque :	33.9~36.7Nm
Unloading pressure :	85%



The valve blocks flow from ② to ③ until 85% pressure is present at ②. With the continued increase pressure on ②, ② to ③ began to overflow, until to the spring's maximum pressure.



X	ADJUSTMENTS	
03	Leakproof hex. and socket screw	
05	Factory Preset and Hidden Adjustments	

Y	SPRINGS			
	Press. range bar	Press. increase bar/turn	Standard setting bar	Cracking press. bar
05	10~100		80	60
10	80~210		160	126