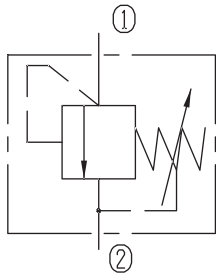


Directly Operated Relief Valves (Poppet-type)

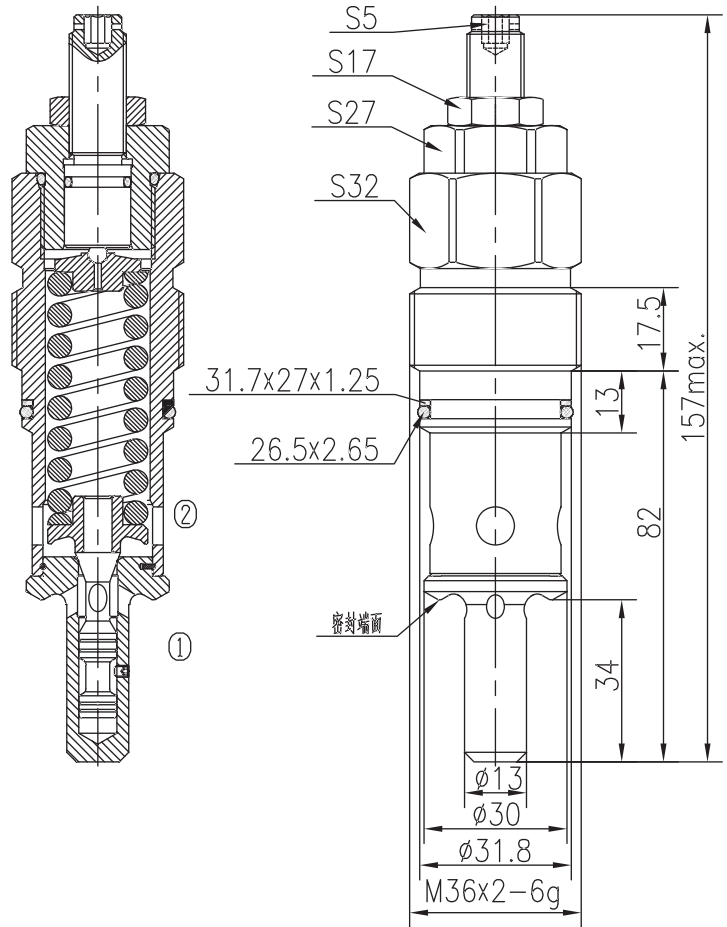


BYF15-02/X.Y

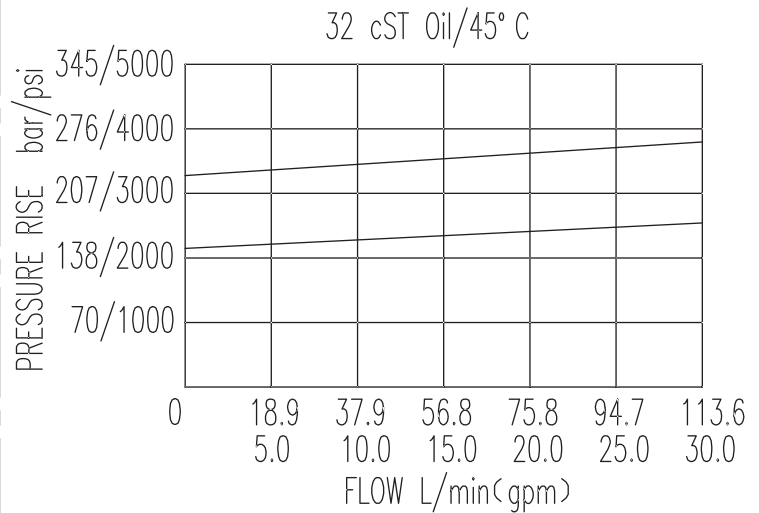


Specifications:

Max working Pressure :	350bar
Flow Max :	120L/min
Internal Leakage :	<30ml/min (75~85% of Setting Pressure at 60L/min)
Filtration Of Oil :	25µm or better
Temperature :	-30~+110℃ (Standard Buna Seals)
Cavity :	T-2115
Installation torque :	62.6~73.4Nm



The valve blocks flow from ① to ② until 85% pressure is present at ①. With the continued increase pressure on ①, ① to ② began to overflow, until to the spring's maximum pressure.



X	ADJUSTMENTS	
03	Leakproof hex. and socket screw	

Y	SPRINGS			
	Press. range bar	Press. increase bar/turn	Standard setting bar	Cracking press. bar
05	50~200	23	175	144
10	150~350	56	250	210