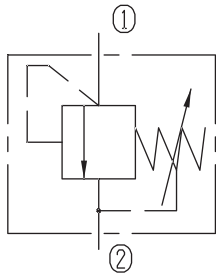


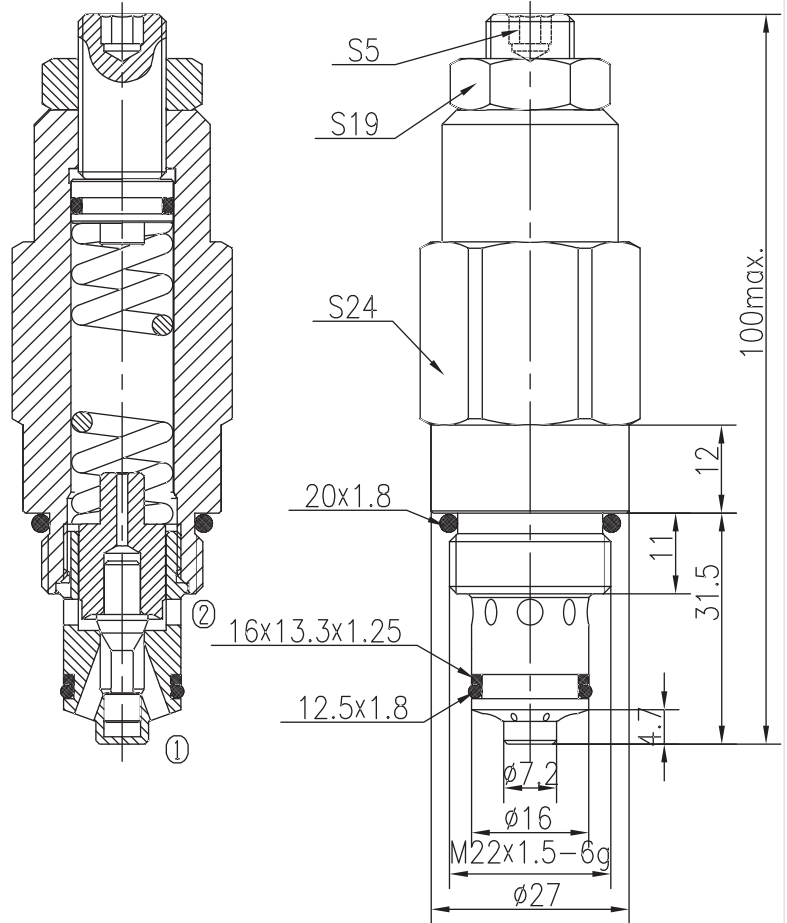
Directly Operated Relief Valves (Poppet-type)

BYF15-01/X.Y

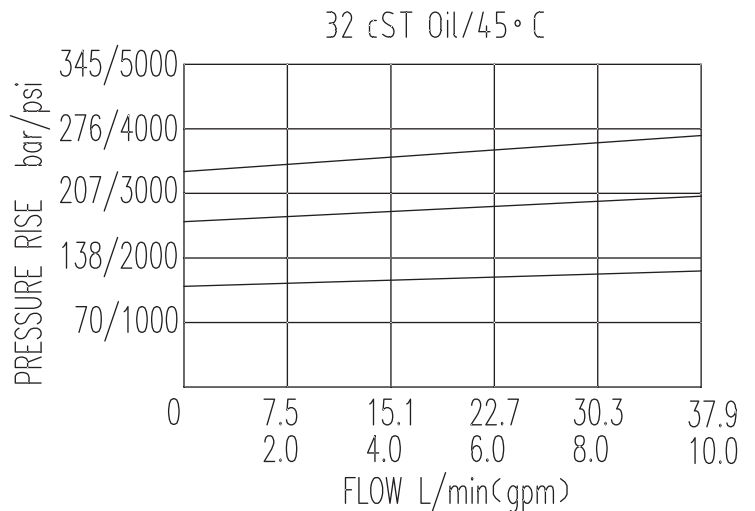


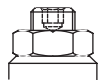
Specifications:

Max working Pressure :	189bar
Flow Max :	35L/min
Internal Leakage :	<30ml/min (75~85% of Setting Pressure at 30L/min)
Filtration Of Oil :	25µm or better
Temperature :	-30~+100°C (Standard Buna Seals)
Cavity :	T-2114
Installation torque :	33.9~36.7Nm



The valve blocks flow from ① to ② until 85% pressure is present at ①. With the continued increase pressure on ①, ① to ② began to overflow, until to the spring's maximum pressure.



X	ADJUSTMENTS	
03	Leakproof hex. and socket screw	

Y	SPRINGS			
	Press. range bar	Press. increase bar/turn	Standard setting bar	Cracking press. bar
05	5~55	12	35	26
10	37~116	29	100	78
15	94~189	31	160	140