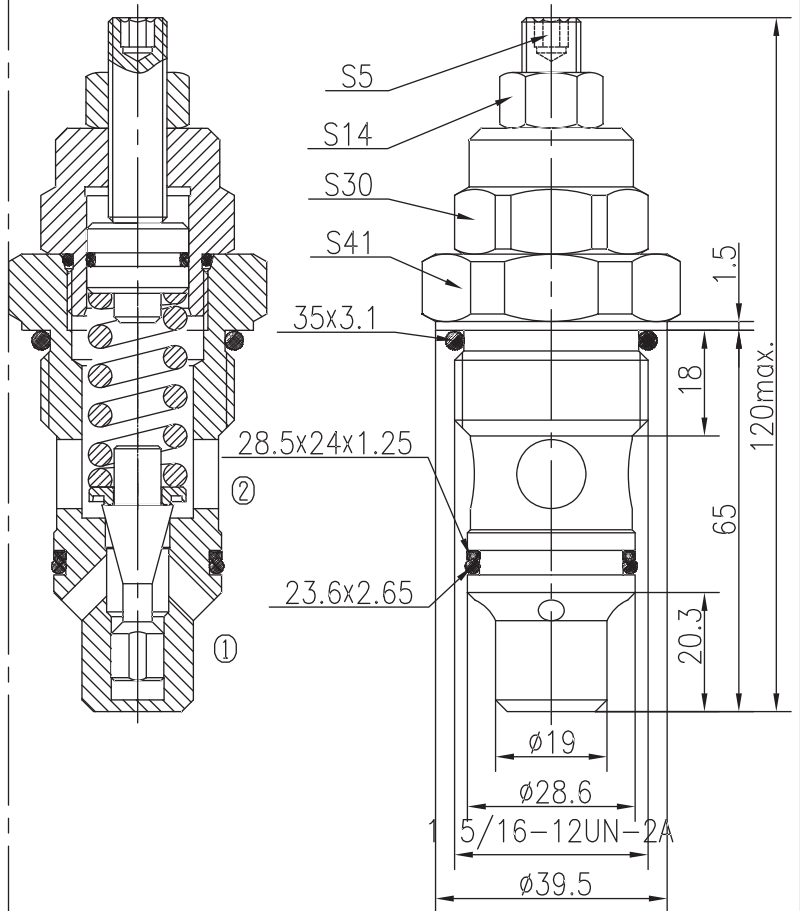
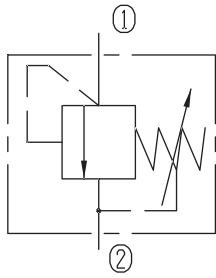


# Directly Operated Relief Valves (Poppet-type)



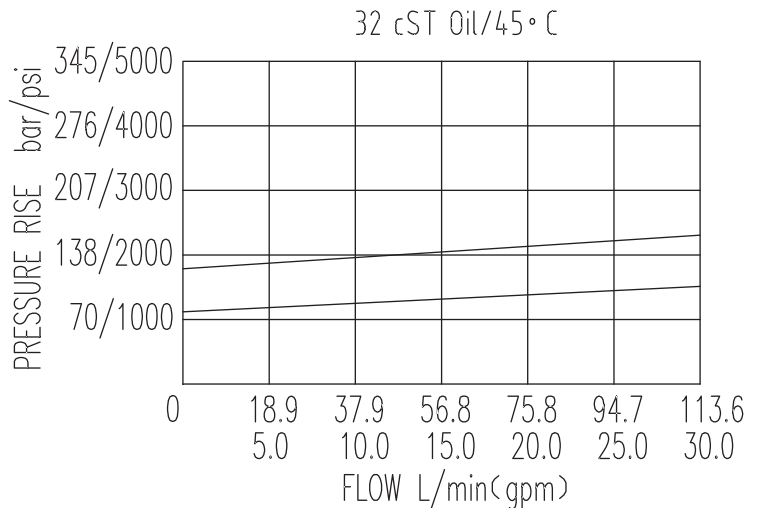
BYF12-00/X.Y



## Specifications:

Max working Pressure :	158bar
Flow Max :	113L/min
Internal Leakage :	<math>\leq 30\text{ml/min}</math> (75~85% of Setting Pressure at 60L/min)
Filtration Of Oil :	25 $\mu\text{m}$ or better
Temperature :	-30~+100 $^{\circ}\text{C}$ (Standard Buna Seals)
Cavity :	T-2113
Installation torque :	62.6~73.4Nm

The valve blocks flow from ① to ② until 85% pressure is present at ①. With the continued increase pressure on ①, ① to ② began to overflow, until to the spring's maximum pressure.



X	ADJUSTMENTS	
03	Leakproof hex. and socket screw	

Y	SPRINGS			
	Press. range bar	Press. increase bar/turn	Standard setting bar	Cracking press. bar
05	47~107	47	100	79
10	94~158	58	150	125