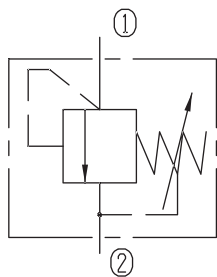


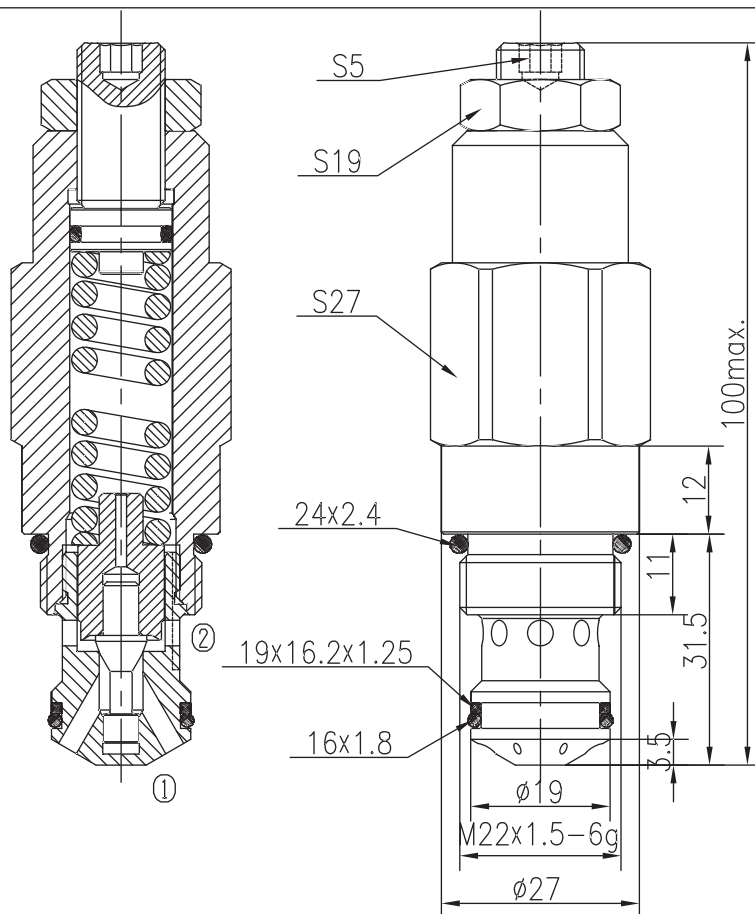
Directly Operated Relief Valves (Poppet-type)

BYF10-16/X.Y

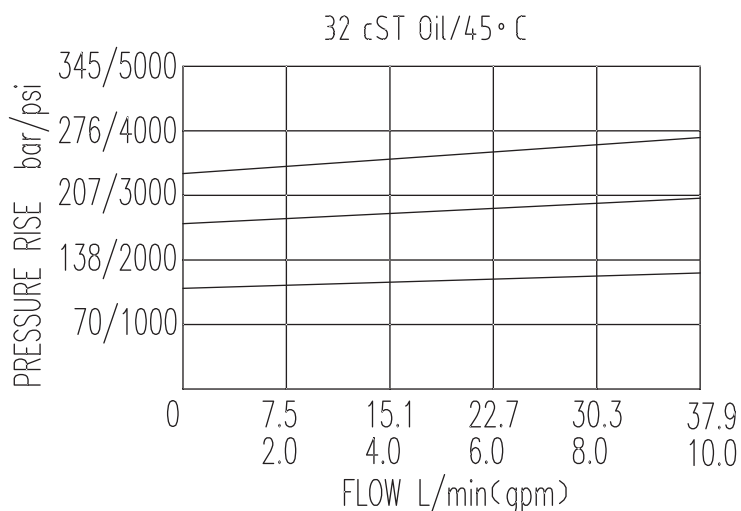


Specifications:

Max working Pressure :	350bar
Flow Max :	50L/min
Internal Leakage :	<30ml/min (75~85% of Setting Pressure at 30L/min)
Filtration Of Oil :	25μm or better
Temperature :	-30~+100℃ (Standard Buna Seals)
Cavity :	T-2112
Installation torque :	33.9~36.7Nm



The valve blocks flow from ① to ② until 85% pressure is present at ①. With the continued increase pressure on ①, ① to ② began to overflow, until to the spring's maximum pressure.



X	ADJUSTMENTS	
03	Leakproof hex. and socket screw	

Y	SPRINGS			
	Press. range bar	Press. increase bar/turn	Standard setting bar	Cracking press. bar
05	5~55	12	35	26
10	37~126	29	100	78
15	92~204	51	200	170
20	186~350	84	280	235