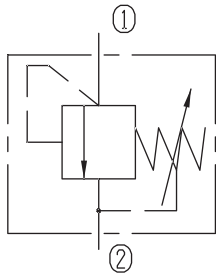


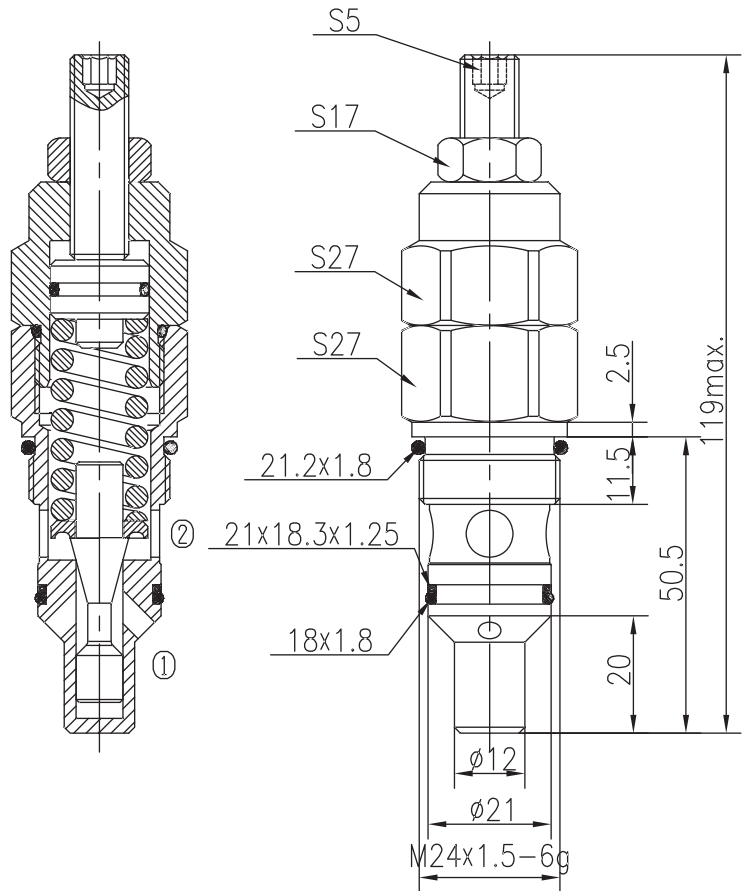
Directly Operated Relief Valves (Poppet-type)

BYF10-00/X.Y

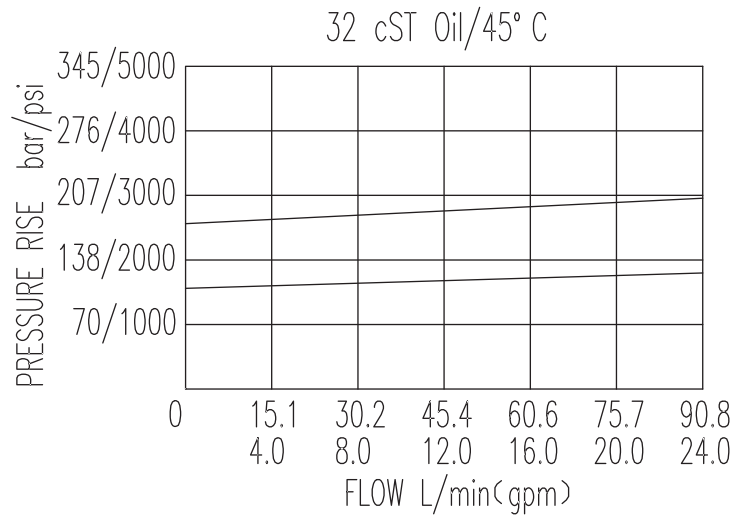


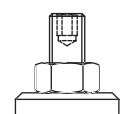
Specifications:

| | |
|------------------------|--|
| Max working Pressure : | 210bar |
| Flow Max : | 90L/min |
| Internal Leakage : | <30ml/min (75~85% of Setting Pressure at 30L/min) |
| Filtration Of Oil : | 25μm or better |
| Temperature : | -30~+100℃ (Standard Buna Seals) |
| Cavity : | T-2111 |
| Installation torque : | 38.7~43.8Nm |



The valve blocks flow from ① to ② until 85% pressure is present at ①. With the continued increase pressure on ①, ① to ② began to overflow, until to the spring's maximum pressure.



| X | ADJUSTMENTS | |
|----|---------------------------------|---|
| 03 | Leakproof hex. and socket screw |  |

| Y | SPRINGS | | | |
|----|------------------|--------------------------|----------------------|---------------------|
| | Press. range bar | Press. increase bar/turn | Standard setting bar | Cracking press. bar |
| 05 | 29~128 | 29 | 120 | 100 |
| 10 | 97~210 | 50 | 200 | 170 |