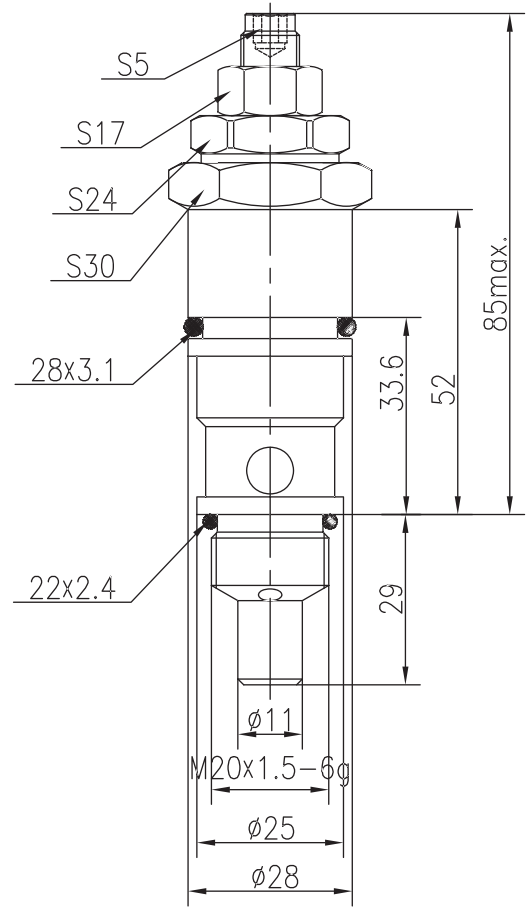
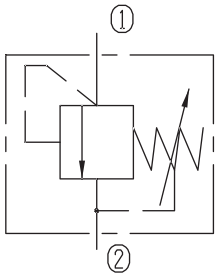


Directly Operated Relief Valves (Poppet-type)

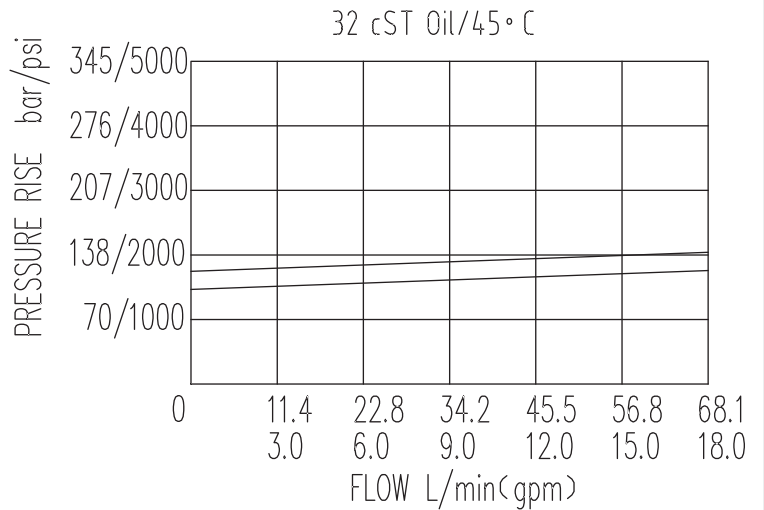
BYF08-11/X.Y



Specifications:

Max working Pressure :	268bar
Flow Max :	60L/min
Internal Leakage :	$\leq 30\text{ml/min}$ (75~85% of Setting Pressure at 30L/min)
Filtration Of Oil :	25 μm or better
Temperature :	-30~+100 $^{\circ}\text{C}$ (Standard Buna Seals)
Cavity :	T-2109
Installation torque :	24.5~27.2Nm

The valve blocks flow from ① to ② until 85% pressure is present at ①. With the continued increase pressure on ①, ① to ② began to overflow, until to the spring's maximum pressure.



X	ADJUSTMENTS	
03	Leakproof hex. and socket screw	

Y	SPRINGS			
	Press. range bar	Press. increase bar/turn	Standard setting bar	Cracking press. bar
05	48~146	37	120	105
10	119~268	45	160	140