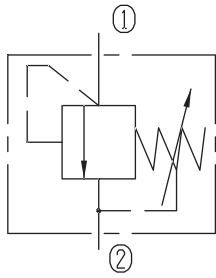


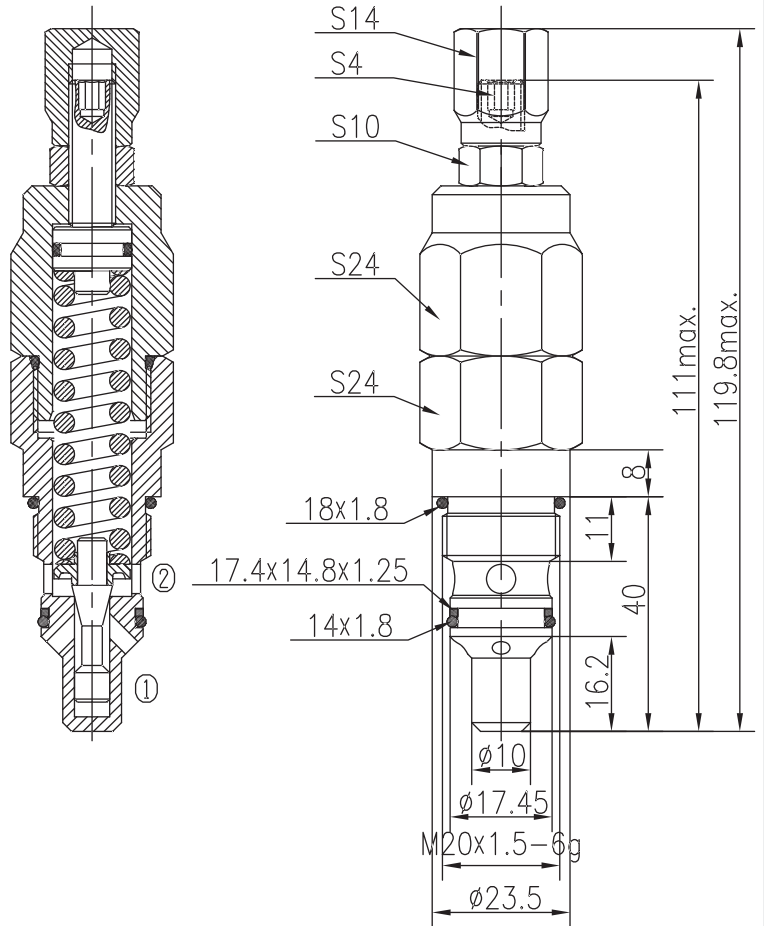
Directly Operated Relief Valves (Poppet-type)

BYF08-09H/X.Y

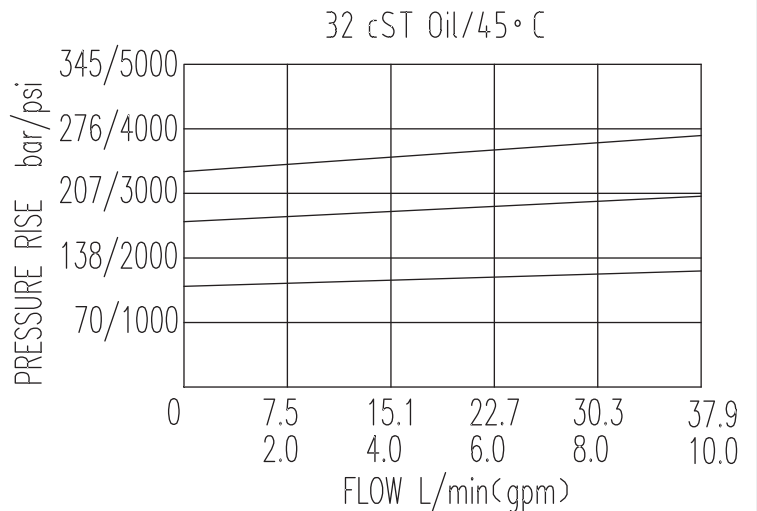


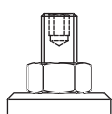
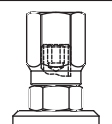
Specifications:

Max working Pressure :	350bar
Flow Max :	35L/min
Internal Leakage :	<30ml/min
(75~85% of Setting Pressure at 30L/min)	
Filtration Of Oil :	25µm or better
Temperature :	-30~+100℃
	(Standard Buna Seals)
Cavity :	T-2110(
Installation torque :	24.5~27.2Nm



The valve blocks flow from ① to ② until 85% pressure is present at ①. With the continued increase pressure on ①, ① to ② began to overflow, until to the spring's maximum pressure.



X	ADJUSTMENTS	
03	Leakproof hex. and socket screw	
05	Factory Preset and Hidden Adjustments	

Y	SPRINGS			
	Press. range bar	Press. increase bar/turn	Standard setting bar	Cracking press. bar
05	40~123	25	120	100
10	97~210	48	200	170
15	178~350	89	250	220