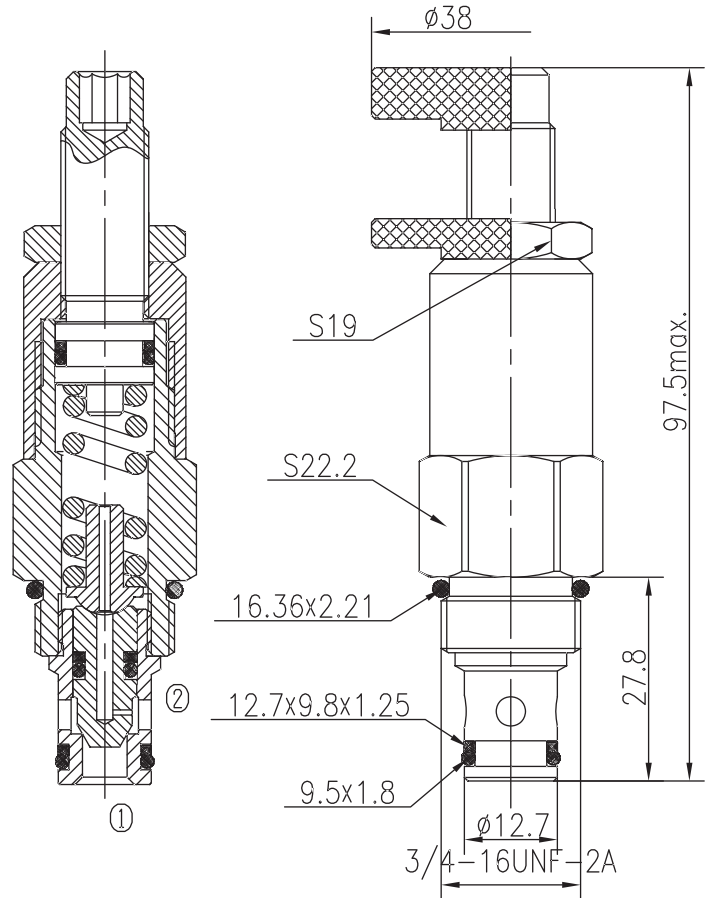
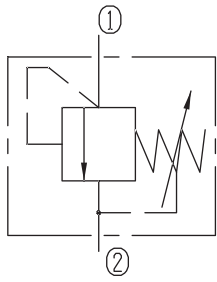


Directly Operated Relief Valves (Poppet-type)

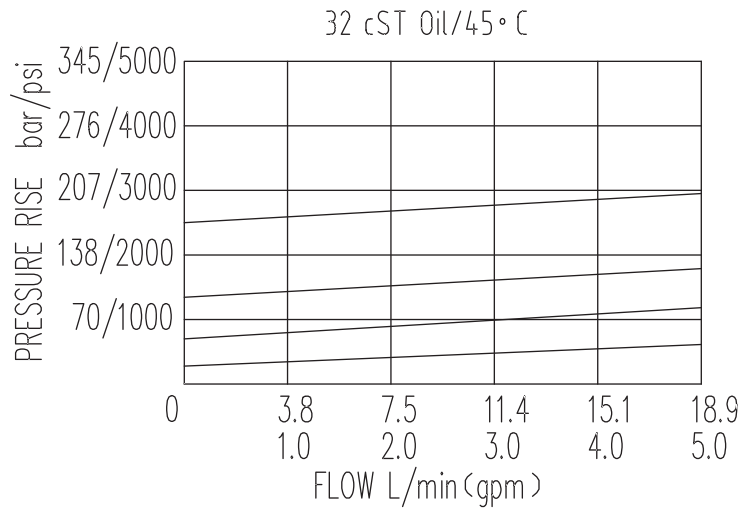
BYF08-00/X.Y



Specifications:

Max working Pressure :	230bar
Flow Max :	20L/min
Internal Leakage :	<30ml/min
(75~85% of Setting Pressure at 10L/min)	
Filtration Of Oil :	25µm or better
Temperature :	-30~+100°C
	(Standard Buna Seals)
Cavity :	T4-1
Installation torque :	24.5~27.2Nm

The valve blocks flow from ① to ② until 85% pressure is present at ①. With the continued increase pressure on ①, ① to ② began to overflow, until to the spring's maximum pressure.



X	ADJUSTMENTS	
03	Leakproof hex. and socket screw	
05	Alum. Knob and Locking Nut	

Y	SPRINGS			
	Press. range bar	Press. increase bar/turn	Standard setting bar	Cracking press. bar
05	7.3~54	7.7	35	25
10	41~107	26	80	60
15	64~147	54	120	90
20	128~230	81	200	170