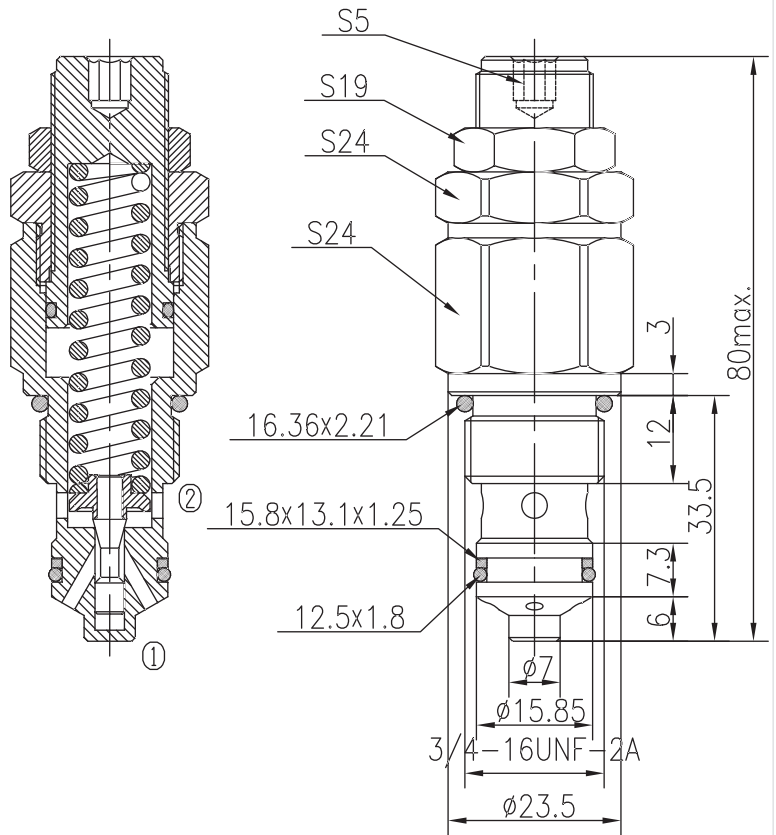
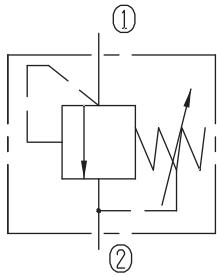


Directly Operated Relief Valves (Poppet-type)

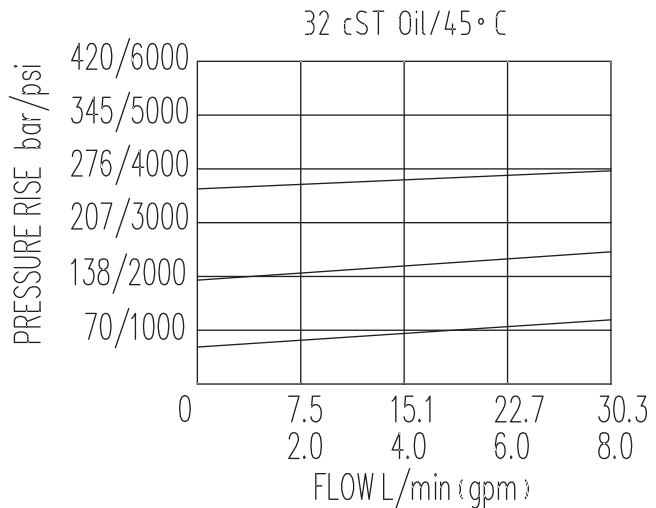
BYF06-09/X.Y



Specifications:

Max working Pressure :	350bar
Flow Max :	25L/min
Internal Leakage :	<30ml/min (75~85% of Setting Pressure at 15L/min)
Filtration Of Oil :	25μm or better
Temperature :	-30~+100℃ (Standard Buna Seals)
Cavity :	T4-S1
Installation torque :	24.5~27.2Nm

The valve blocks flow from ① to ② until 85% pressure is present at ①. With the continued increase pressure on ①, ① to ② began to overflow, until to the spring's maximum pressure.



X	ADJUSTMENTS	
03	Leakproof hex. and Socket Screw	

Y	SPRINGS			
	Press. range bar	Press. increase bar/turn	Standard setting bar	Cracking press. bar
05	8~47	7.8	40	28
10	23~94	15.6	80	60
15	67~179	27	160	135
20	157~350	52	280	250