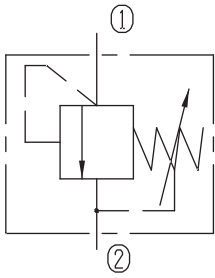


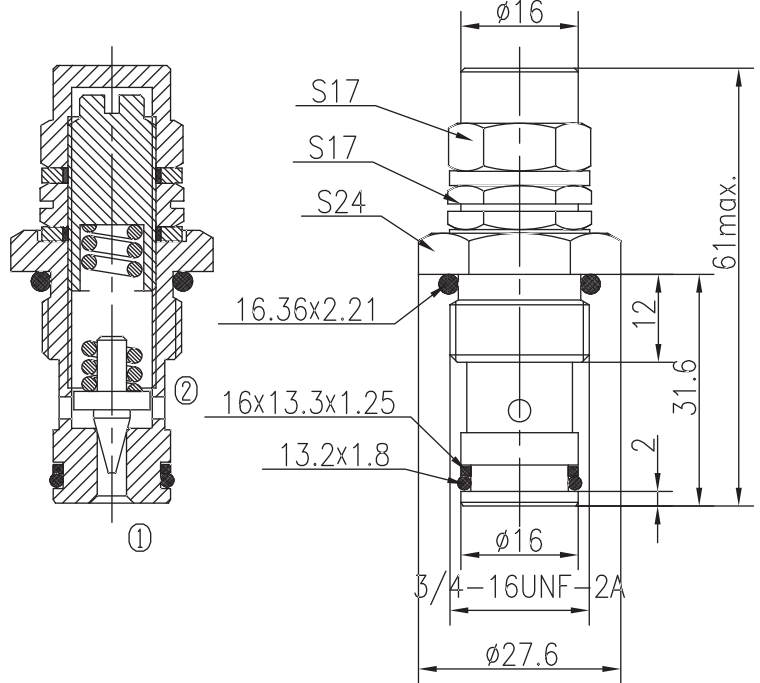
Directly Operated Relief Valves (Poppet-type)

BYF06-02/X.Y

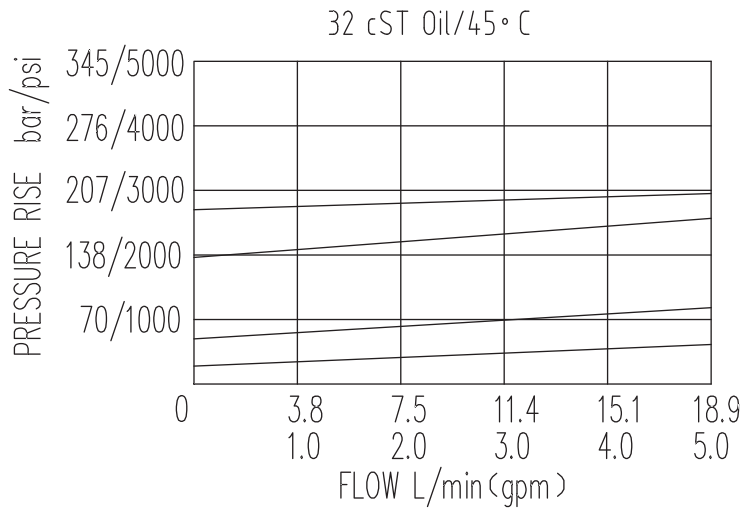


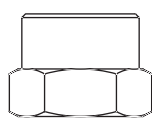
Specifications:

Max working Pressure :	210bar
Flow Max :	18L/min
Internal Leakage :	<30ml/min
(75~85% of Setting Pressure at 8L/min)	
Filtration Of Oil :	25μm or better
Temperature :	-30~+100℃
	(Standard Buna Seals)
Cavity :	T-2106
Installation torque :	24.5~27.2Nm



The valve blocks flow from ① to ② until 85% pressure is present at ①. With the continued increase pressure on ①, ① to ② began to overflow, until to the spring's maximum pressure.



X	ADJUSTMENTS	
03	Factory Preset and Hidden Adjustments	

Y	SPRINGS			
	Press. range bar	Press. increase bar/turn	Standard setting bar	Cracking press. bar
05	7~47	10	35	25
10	39~98	19	80	58
15	73~171	37	160	130
20	123~210	62	200	170