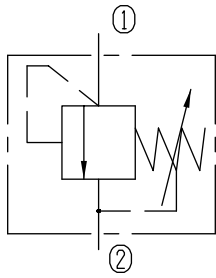


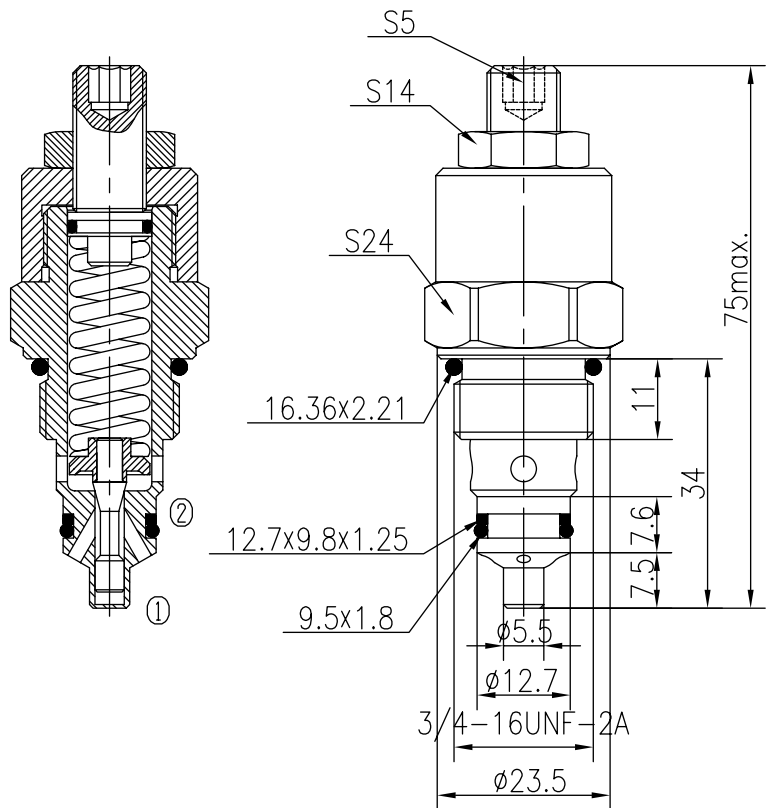
Directly Operated Relief Valves (Poppet-type)

BYF06-00A/X.Y

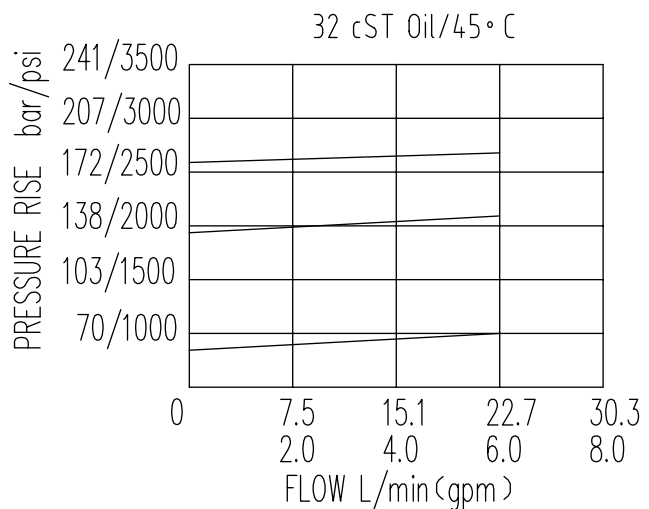


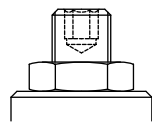
Specifications:

Max working Pressure :	240bar
Flow Max :	25L/min
Internal Leakage :	<30ml/min
(75~85% of Setting Pressure at 8L/min)	
Filtration Of Oil :	25μm or better
Temperature :	-30~+100℃
	(Standard Buna Seals)
Cavity :	T4-1(See Page 7.1.1)
Installation torque :	24.5~27.2Nm



The valve blocks flow from ① to ② until 85% pressure is present at ①. With the continued increase pressure on ①, ① to ② began to overflow, until to the spring's maximum pressure.



X	ADJUSTMENTS	
03	Leakproof hex. and Socket Screw	

Y	SPRINGS			
	Press. range bar	Press. increase bar/turn	Standard setting bar	Cracking press. bar
05	6~63	8.7	60	47
10	58~171	21	160	130
15	140~240	36	200	170