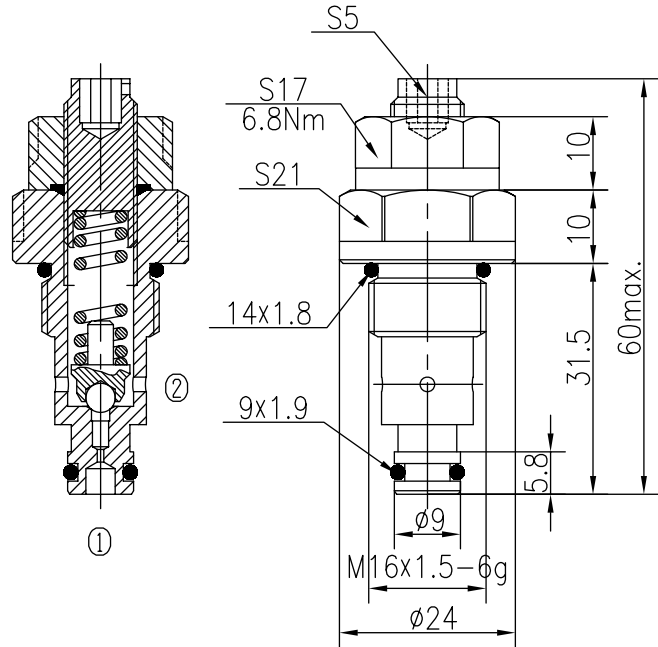
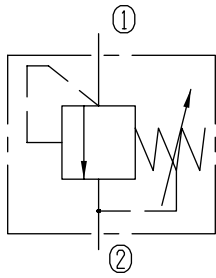


# Directly Operated Relief Valves (Ball-type)

BYF04-01/X.Y

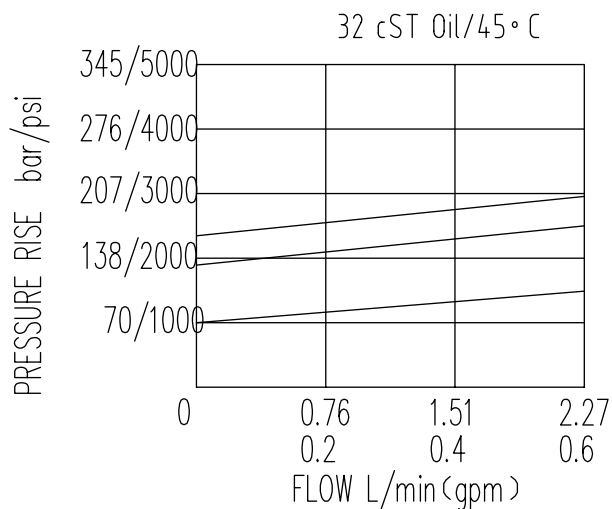


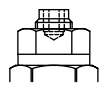
## Specifications:

Max working Pressure :	320bar
Flow Max :	2.5L/min
Internal Leakage :	<30ml/min (70~80% of Setting Pressure at 2L/min)
Filtration Of Oil :	25μm or better
Temperature :	-30~+100℃ (Standard Buna Seals)
Cavity :	T-2101(See Page 7.1.6)
Installation torque :	13.6~16.3Nm

The valve blocks flow from ① to ② until 80% pressure is present at ①. With the continued increase pressure on ①, ① to ② began to overflow, until to the spring's maximum pressure.

Note: There will be leakage at the adjustment screw in the process of regulating pressure, but without leakage after locking.



X	ADJUSTMENTS	
03	Looseproof hex. and Socket Screw	

Y	SPRINGS			
	Press. range bar	Press. increase bar/turn	Standard setting bar	Cracking press. bar
10	5~120	35	100	70
15	100~220	49	160	120
20	160~320	83	200	160