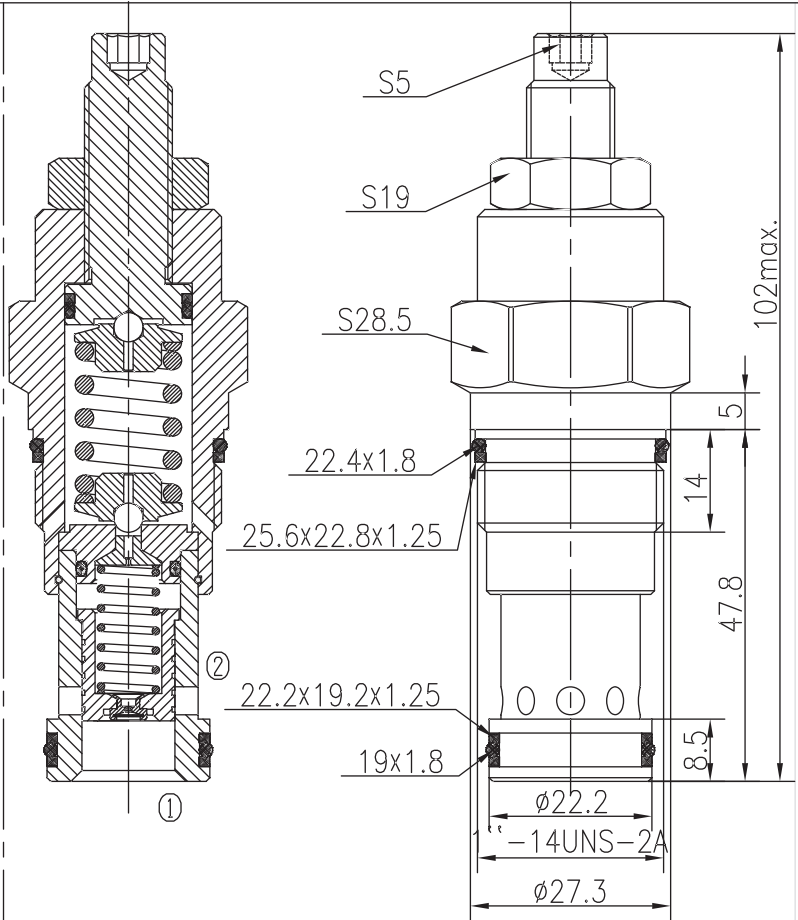
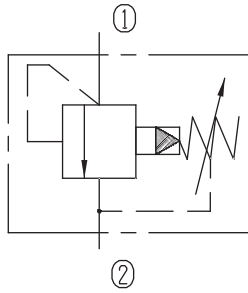


# Pilot-operated Relief Valves (Spool-type)



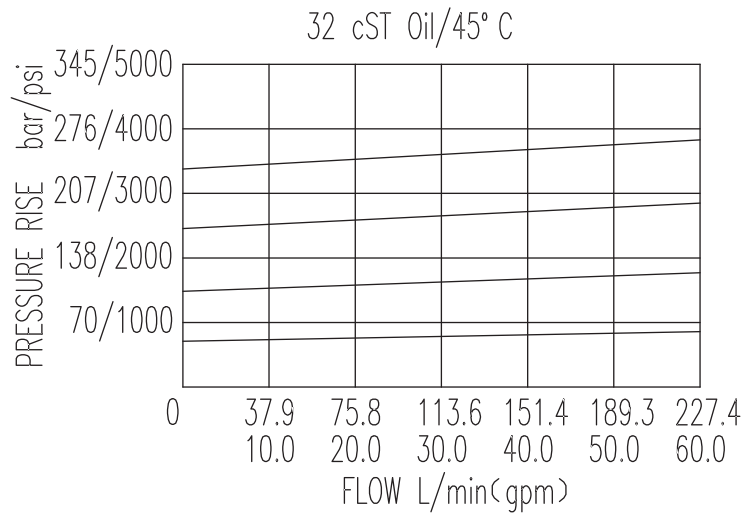
BXYF12GE-00/X.Y



## Specifications:

Max working Pressure :	350bar
Flow Max :	200L/min
Internal Leakage :	<80ml/min (85% of Setting Pressure at 30L/min)
Filtration Of Oil :	25µm or better
Temperature :	-30~+100℃ (Standard Buna Seals)
Cavity :	T-3A
Installation torque :	60~70Nm

The valve blocks flow from ① to ② until 90% pressure is present at ①. With the continued increase pressure on ①, ② to ② began to overflow, until to the spring's maximum pressure.



X	ADJUSTMENTS	
03	Leakproof hex. and socket screw	

Y	SPRINGS			
	Press. range bar	Press. increase bar/turn	Standard setting bar	Cracking press. bar
05	16~78	22	60	50
10	55~126	38	120	105
15	102~210	64	180	162
20	175~420	87	250	220