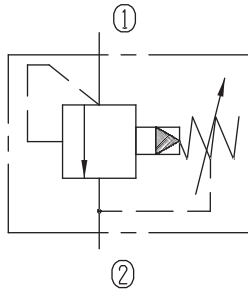


Pilot-operated Relief Valves (Spool-type)

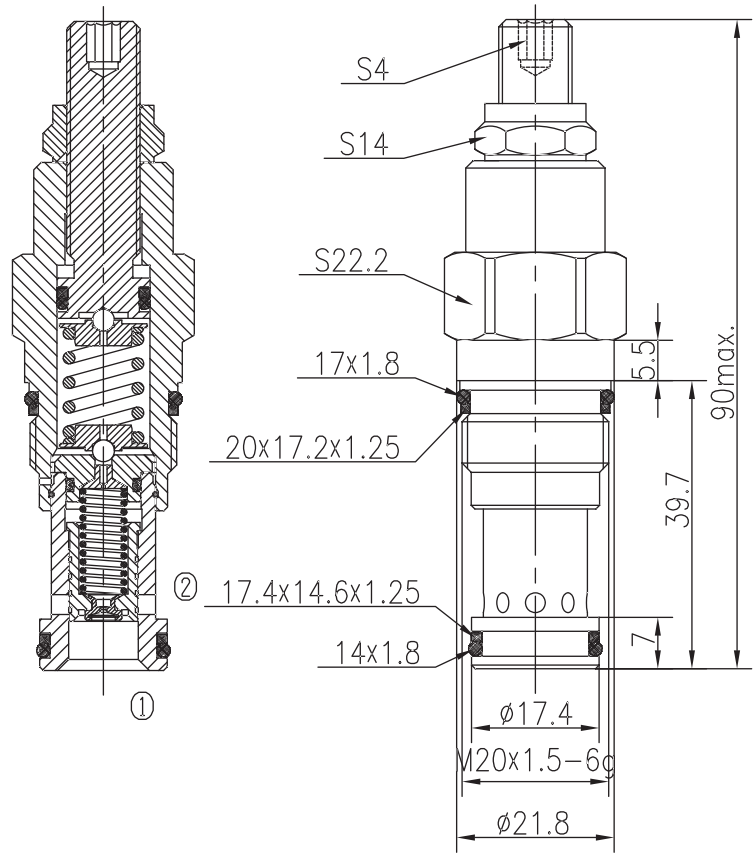


BXYF10EE-00/X.Y

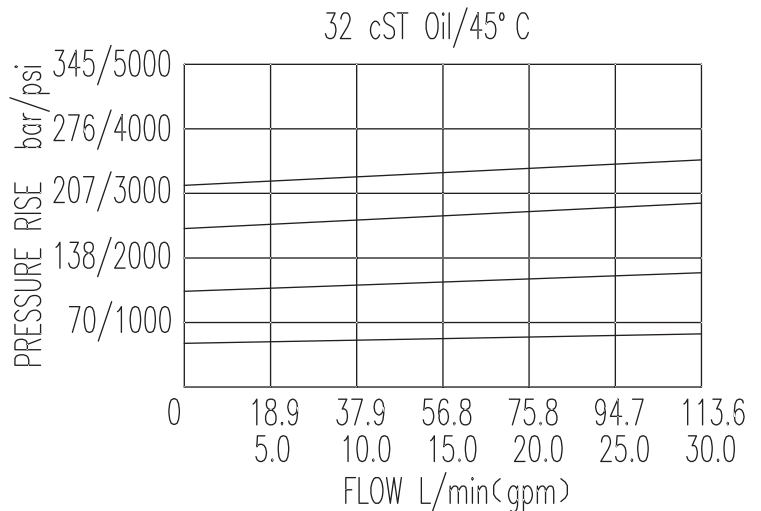


Specifications:

Max working Pressure :	350bar
Flow Max :	95L/min
Internal Leakage :	<80ml/min (85% of Setting Pressure at 30L/min)
Filtration Of Oil :	25μm or better
Temperature :	-30~+100°C (Standard Buna Seals)
Cavity :	T-10A
Installation torque :	45~50Nm



The valve blocks flow from 0 to 0 until 90% pressure is present at 0. With the continued increase pressure on 0, 0 to 0 began to overflow, until to the spring's maximum pressure.



X	ADJUSTMENTS	
03	Leakproof hex. and socket screw	

Y	SPRINGS			
	Press. range bar	Press. increase bar/turn	Standard setting bar	Cracking press. bar
05	16~78	16	60	50
10	47~120	31	120	105
15	79~210	53	180	162
20	175~350	87	220	193