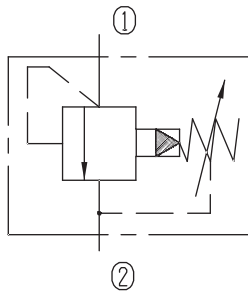


Pilot-operated Relief Valves (Spool-type)

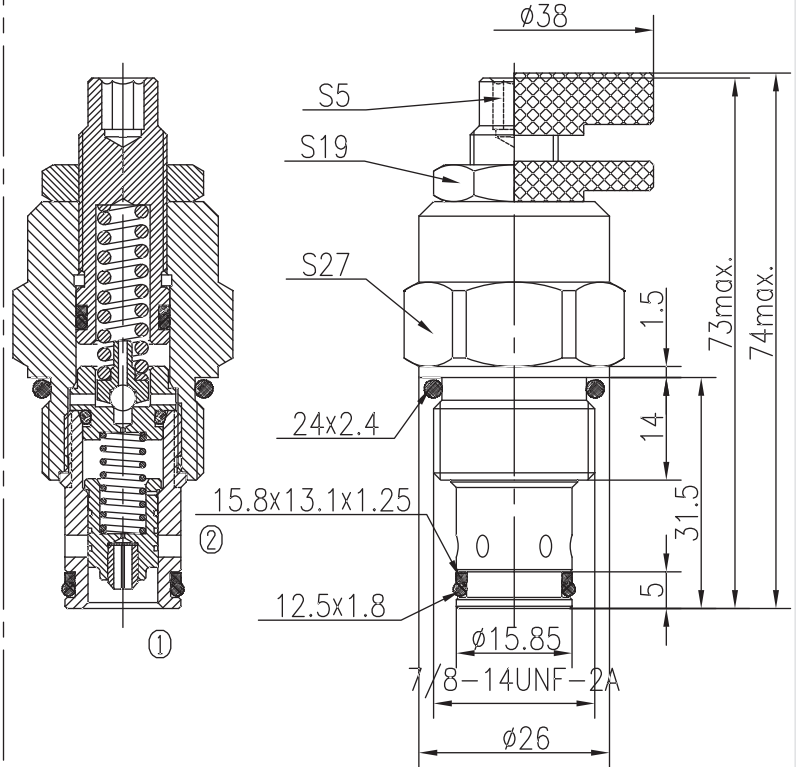


BXYF10-08/X.Y

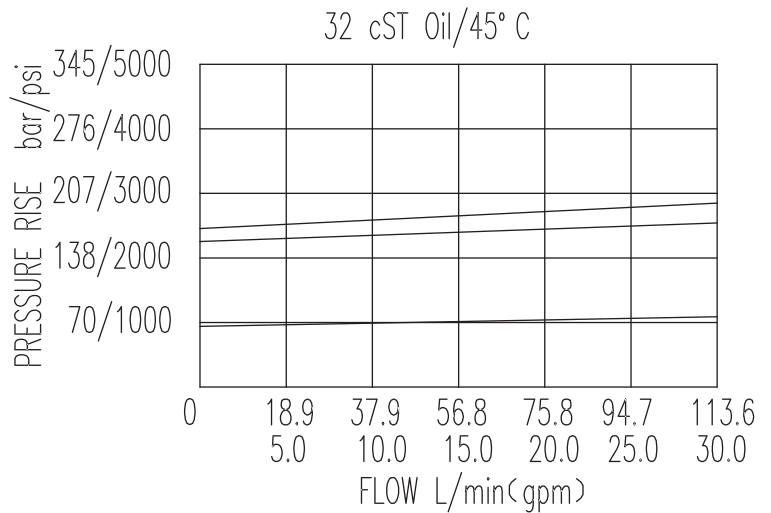


Specifications:

Max working Pressure :	350bar
Flow Max :	113L/min
Internal Leakage :	<80ml/min (85% of Setting Pressure at 30L/min)
Filtration Of Oil :	25µm or better
Temperature :	-30~+100°C (Standard Buna Seals)
Cavity :	T5-1
Installation torque :	33.9~36.7Nm



The valve blocks flow from ① to ② until 90% pressure is present at ①. With the continued increase pressure on ①, ② to ③ began to overflow, until to the spring's maximum pressure.



X	ADJUSTMENTS	
03	Leakproof hex. and socket screw	
05	Alum. Knob and Locking Nut	

Y	SPRINGS			
	Press. range bar	Press. increase bar/turn	Standard setting bar	Cracking press. bar
05	7~83	35	80	68
10	45~165	83	160	144
15	128~345	177	180	162