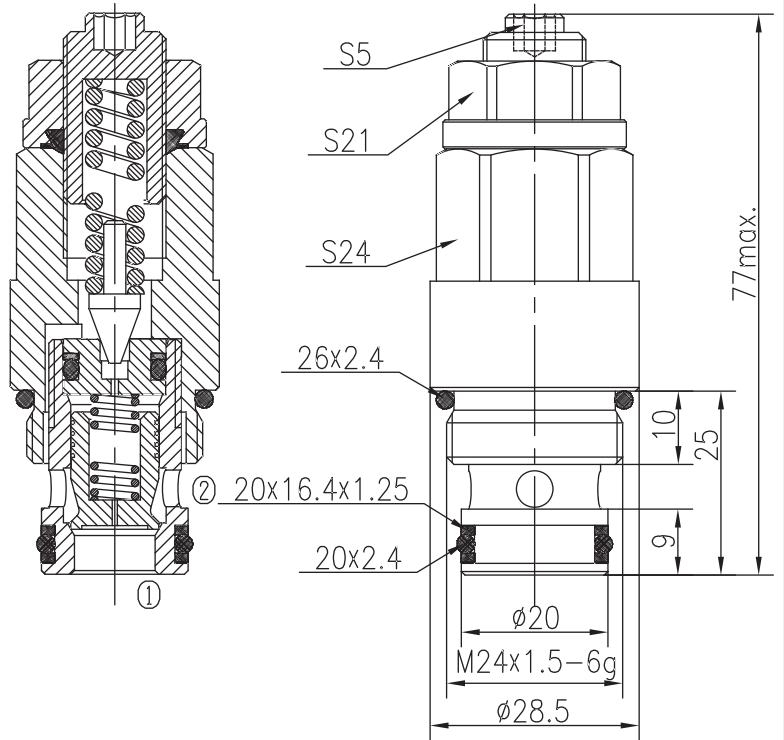
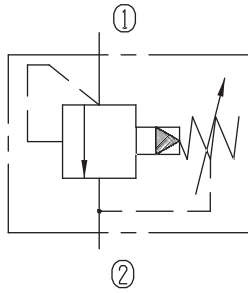


Pilot-operated Relief Valves (Poppet-type)



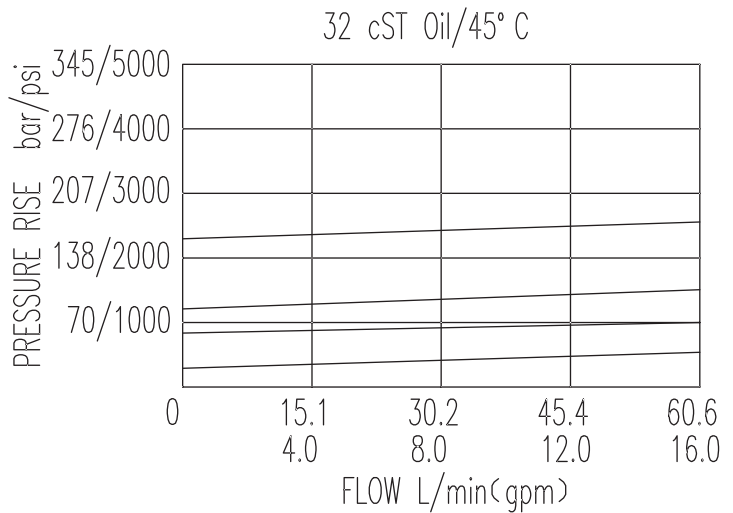
BXYF10-02/X.Y



Specifications:

Max working Pressure :	315bar
Flow Max :	60L/min
Internal Leakage :	$\leq 30\text{ml/min}$
(85% of Setting Pressure at 30L/min)	
Filtration Of Oil :	25 μm or better
Temperature :	-30~+100 $^{\circ}\text{C}$
(Standard Buna Seals)	
Cavity :	T-2301
Installation torque :	38.7~43.8Nm

The valve blocks flow from ① to ② until 90% pressure is present at ①. With the continued increase pressure on ①, ① to ② began to overflow, until to the spring's maximum pressure.



X	ADJUSTMENTS	
03	Looseproof hex. and socket screw	

Y	SPRINGS			
	Press. range bar	Press. increase bar/turn	Standard setting bar	Cracking press. bar
05	1~50	13	35	27
10	40~99	30	70	59
15	60~150	47	120	105
20	130~315	127	175	157