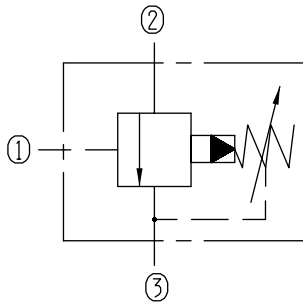


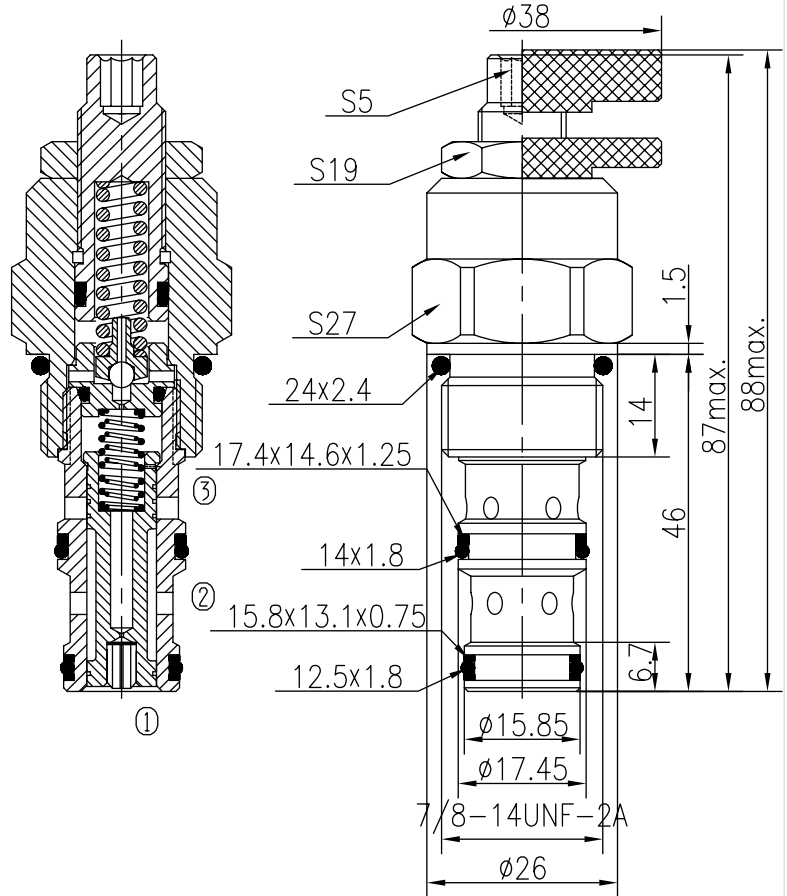
Pilot-operated Sequence Valves (Externally Piloted, Internally Vented)

BXSF10-00/X.Y

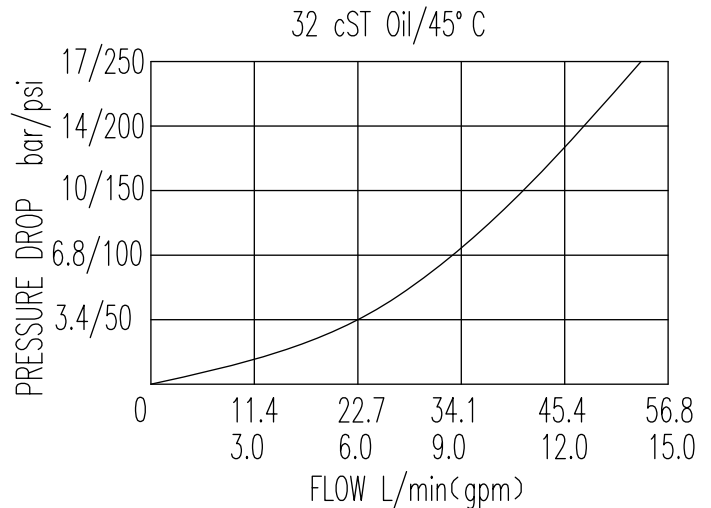


Specifications:

Max working Pressure :	345bar
Flow Max :	60L/min
Internal Leakage :	<80ml/min (850% of Setting Pressure at 30L/min)
Filtration Of Oil :	25µm or better
Temperature :	-30~+110°C (Standard Buna Seals)
Cavity :	T5-2
Installation torque :	33.9~36.7Nm
Standard Block Model	T5-21*/23*24*/26*



The pilot pressure is obtained from an external source and not from the pressure port. When the ② port pressure exceeds the valve setting, the flow allows from ① to ③. Any pressure at port ② is additive to the pressure setting. It is most common for port ② to be connected to tank.



X	ADJUSTMENTS	
03	Leakproof hex. and socket screw	
05	Alum. Knob and Locking Nut	

Y	SPRINGS			
	Press. range bar	Press. increase bar/turn	Standard setting bar	Cracking press. bar
05	7~83	35	80	68
10	45~165	83	160	144
15	128~345	177	180	162