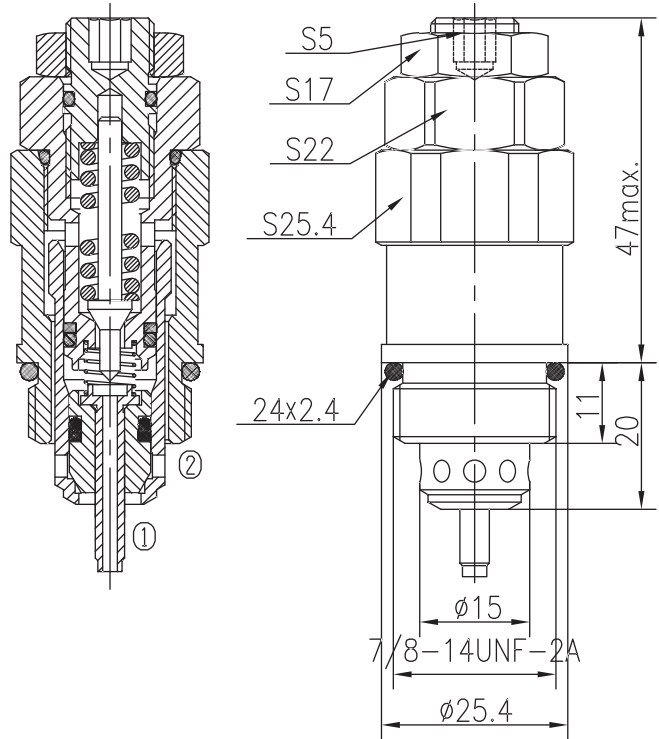
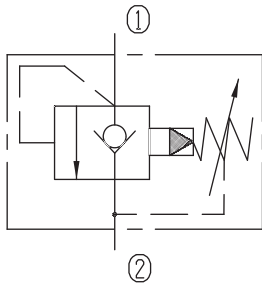


Pilot-operated Check Relief Valves (Poppet-type)

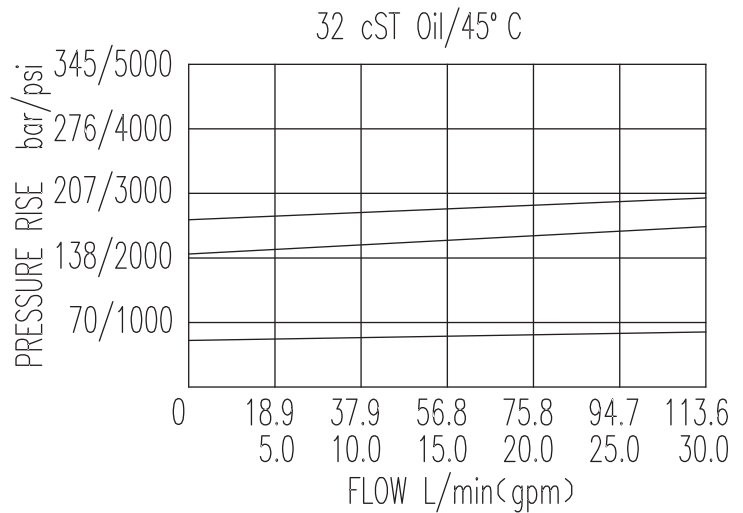
BXDYF20-10/X.Y



Specifications:

Max working Pressure :	345bar
Flow Max :	113L/min
Internal Leakage :	$\leq 30\text{ml/min}$ (80~90% of Setting Pressure at 30L/min)
Filtration Of Oil :	25 μm or better
Temperature :	-30~+100 $^{\circ}\text{C}$ (Standard Buna Seals)
Cavity :	T-2309
Installation torque :	44.9~50.3Nm
Reverse Cracking Pressure :	1.5bar

The valve blocks flow from ① to ② until 90% pressure is present at ①. With the continued increase pressure on ①, ① to ② began to overflow, until to the spring's maximum pressure.



X	ADJUSTMENTS	
03	Looseproof hex. and socket screw	

Y	SPRINGS			
	Press. range bar	Press. increase bar/turn	Standard setting bar	Cracking press. bar
05	10~108	68	80	68
10	20~175	111	160	145
15	60~345	255	200	185