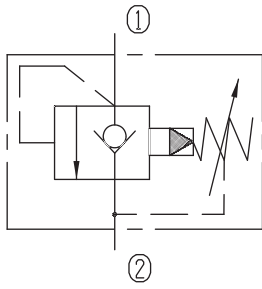


# Pilot-operated Check Relief Valves (Poppet-type)

XDYF20-08/X.Y



### Specifications:

Max working Pressure : 315bar

Flow Max : 113L/min

Internal Leakage : <30ml/min  
(80~90% of Setting Pressure at 30L/min)

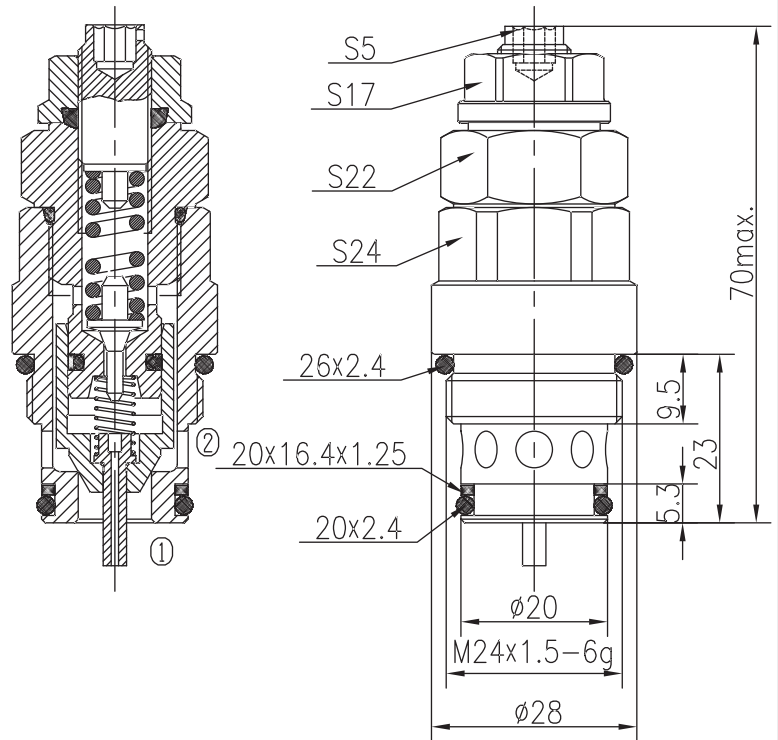
Filtration Of Oil : 25μm or better

Temperature : -30~+100°C  
(Standard Buna Seals)

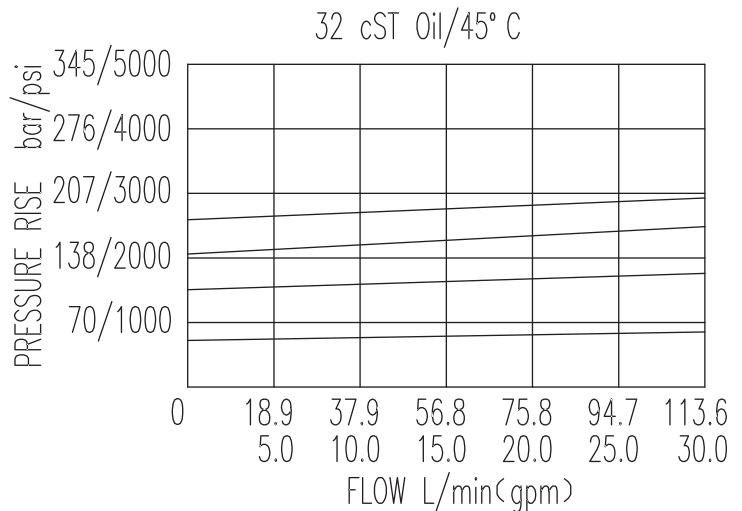
Cavity : T-2301

Installation torque : 38.7~43.8Nm

Reverse Cracking Pressure : 1.5bar



The valve blocks flow from ① to ② until 90% pressure is present at ①. With the continued increase pressure on ①, ① to ② began to overflow, until to the spring's maximum pressure.



X	ADJUSTMENTS	
03	Looseproof hex. and socket screw	

Y	SPRINGS			
	Press. range bar	Press. increase bar/turn	Standard setting bar	Cracking press. bar
05	10~64	25	60	48
10	55~130	58	120	102
15	110~210	97	160	140
20	160~315	160	200	180