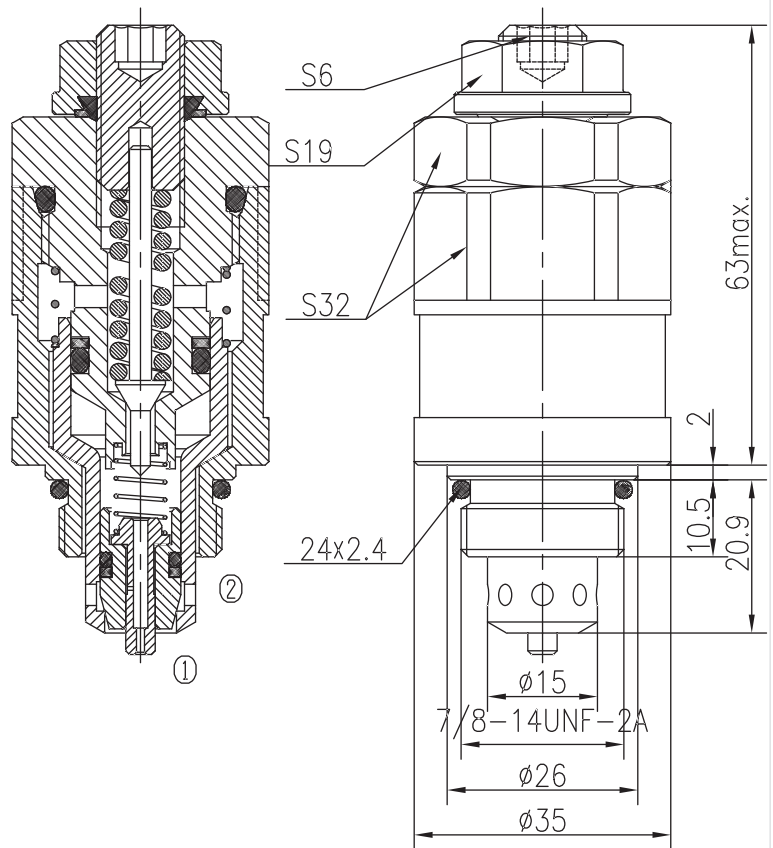
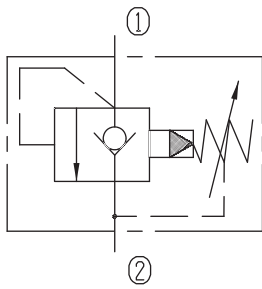


Pilot-operated Check Relief Valves (Poppet-type)

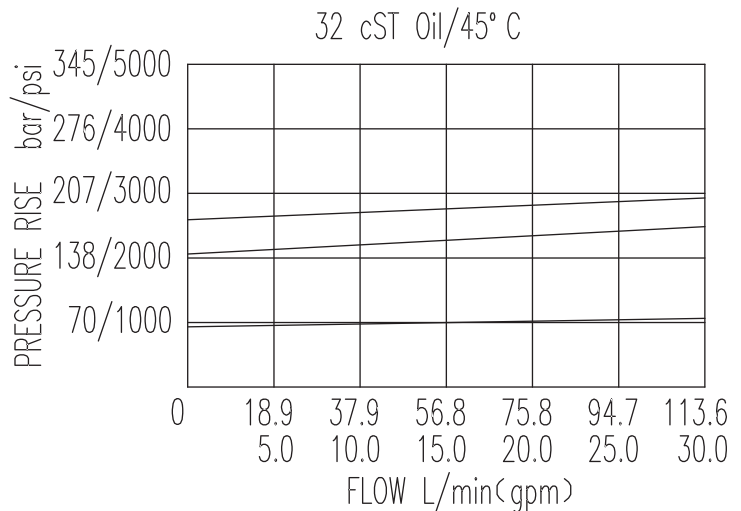
XDYF20-06A/X.Y

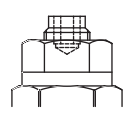


Specifications:

Max working Pressure :	315bar
Flow Max :	113L/min
Internal Leakage :	<30ml/min (80~90% of Setting Pressure at 30L/min)
Filtration Of Oil :	25µm or better
Temperature :	-30~+100℃ (Standard Buna Seals)
Cavity :	T-2309
Installation torque :	44.5~50.3Nm
Reverse Cracking Pressure :	1.5bar

The valve blocks flow from ① to ② until 90% pressure is present at ①. With the continued increase pressure on ①, ① to ② began to overflow, until to the spring's maximum pressure.



X	ADJUSTMENTS	
03	Looseproof hex. and socket screw	

Y	SPRINGS			
	Press. range bar	Press. increase bar/turn	Standard setting bar	Cracking press. bar
05	10~100	59	80	68
10	40~197	80	160	145
15	60~345	142	200	185