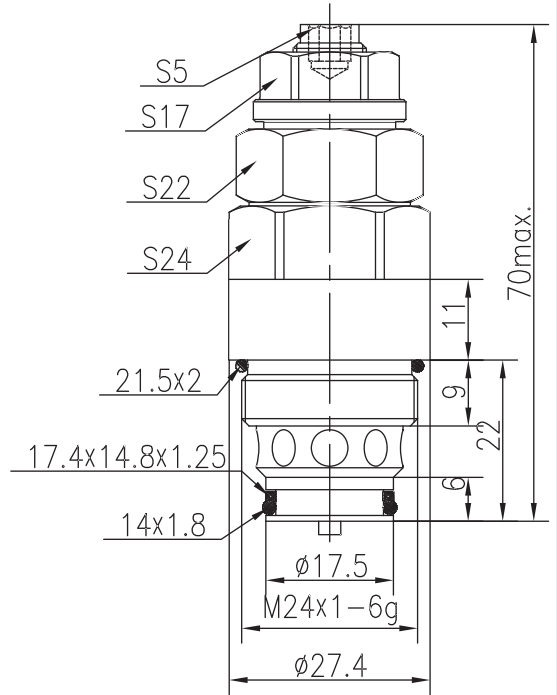
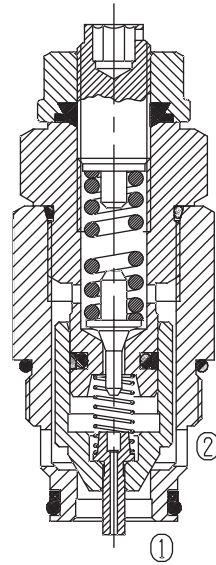
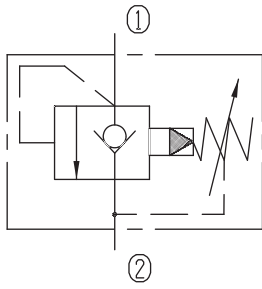


Pilot-operated Check Relief Valves (Poppet-type)



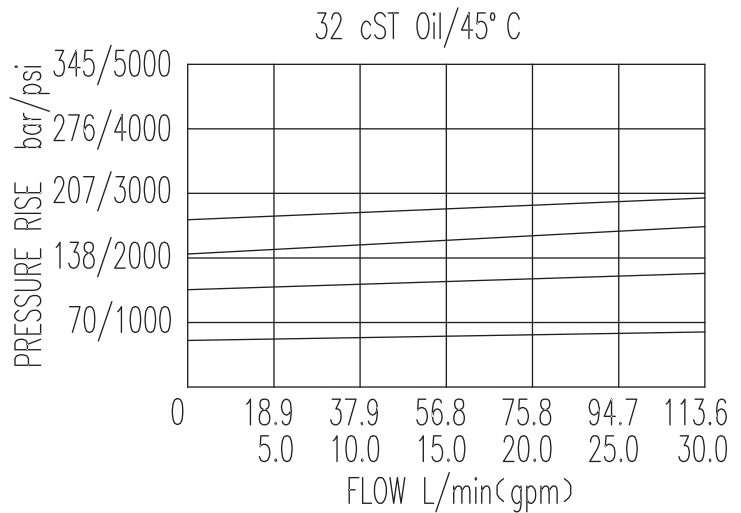
BXDYF20-03/X.Y



Specifications:

Max working Pressure :	315bar
Flow Max :	113L/min
Internal Leakage :	$\leq 30\text{ml/min}$ (80~90% of Setting Pressure at 30L/min)
Filtration Of Oil :	25 μm or better
Temperature :	-30~+100 $^{\circ}\text{C}$ (Standard Buna Seals)
Cavity :	T-2303
Installation torque :	38.7~43.8Nm
Reverse Cracking Pressure :	1.5bar

The valve blocks flow from ① to ② until 90% pressure is present at ①. With the continued increase pressure on ①, ① to ② began to overflow, until to the spring's maximum pressure.



X	ADJUSTMENTS	
03	Looseproof hex. and socket screw	

Y	SPRINGS			
	Press. range bar	Press. increase bar/turn	Standard setting bar	Cracking press. bar
05	10~64	25	60	48
10	55~130	58	120	102
15	110~210	97	160	140
20	160~315	160	200	180