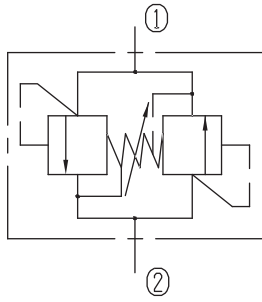


Bi-directional Relief Valves (Poppet-type)

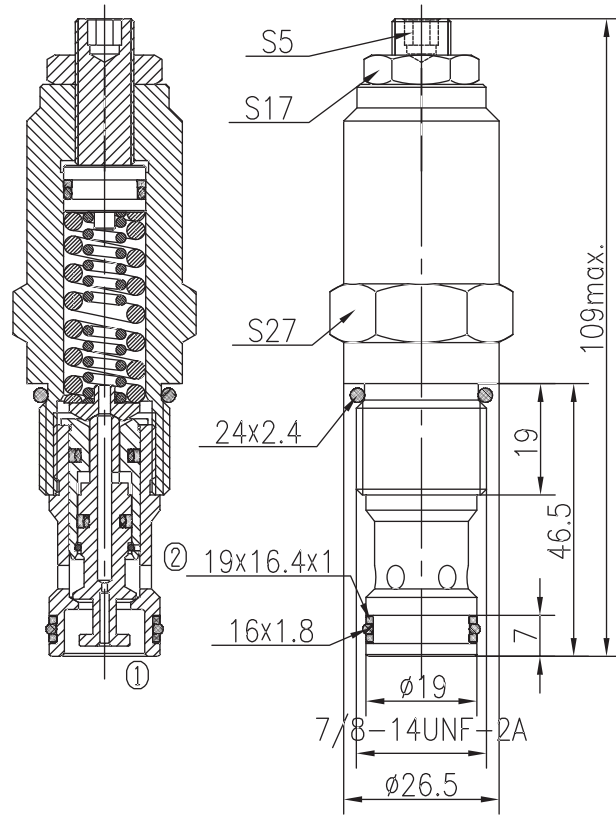


BSYF10-01/X.Y

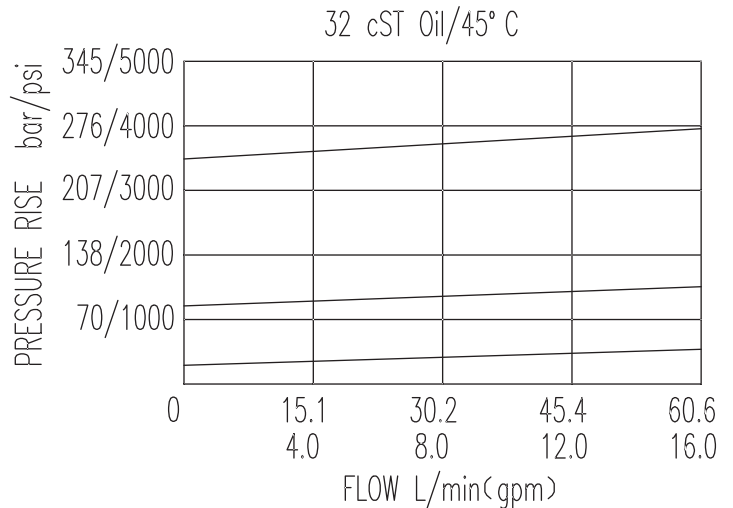


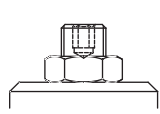
Specifications:

Max working Pressure :	280bar
Flow Max :	60L/min
Internal Leakage :	≤3ml/min (80% of Setting Pressure at 12L/min)
Filtration Of Oil :	25μm or better
Temperature :	-30~+100℃ (Standard Buna Seals)
Cavity :	T-2702
Installation torque :	33.9~36.7Nm



The valve blocks flow from ① to ② until 85% pressure is present at ①. With the continued increase pressure on ①, ① to ② began to overflow, until to the spring's maximum pressure.



X	ADJUSTMENTS	
03	Leakproof hex. and socket screw	

Y	SPRINGS			
	Press. range bar	Press. increase bar/turn	Standard setting bar	Cracking press. bar
05	19~82	14	60	45
10	69~165	28	120	98
15	116~280	63	270	230