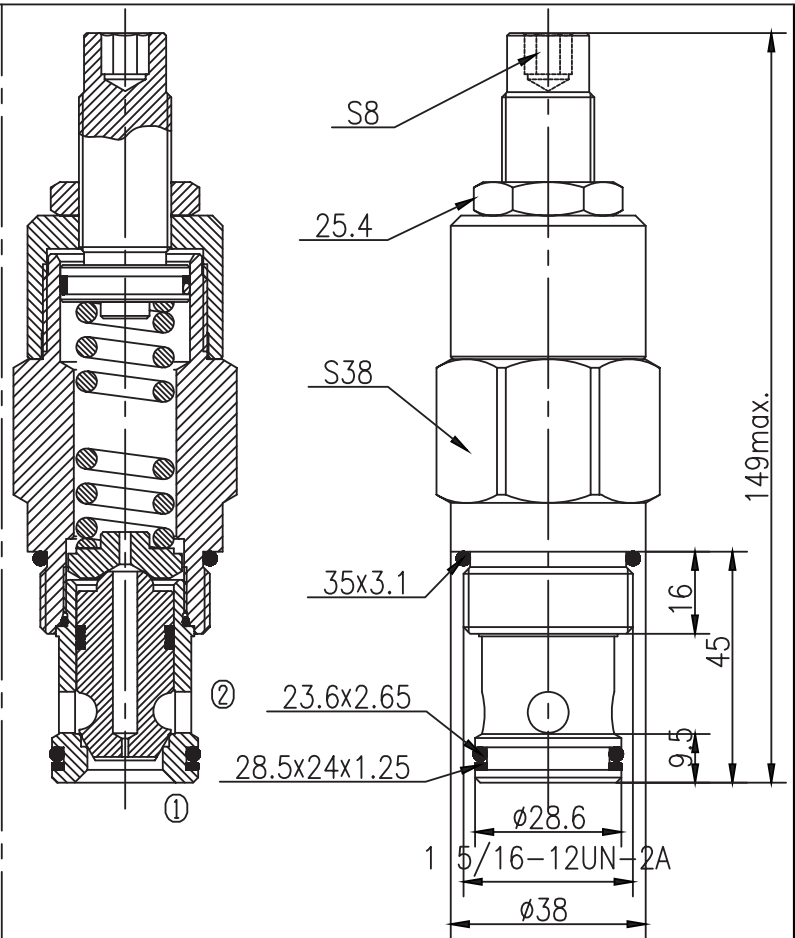
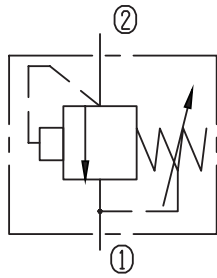


Differential Area Relief Valves (Poppet-type)



BCYF16-00/X.Y



Specifications:

Max working Pressure : 120bar

Flow Max : 250L/min

Internal Leakage : <30ml/min

(75~85% of Setting Pressure at 60L/min)

Filtration Of Oil : 25μm or better

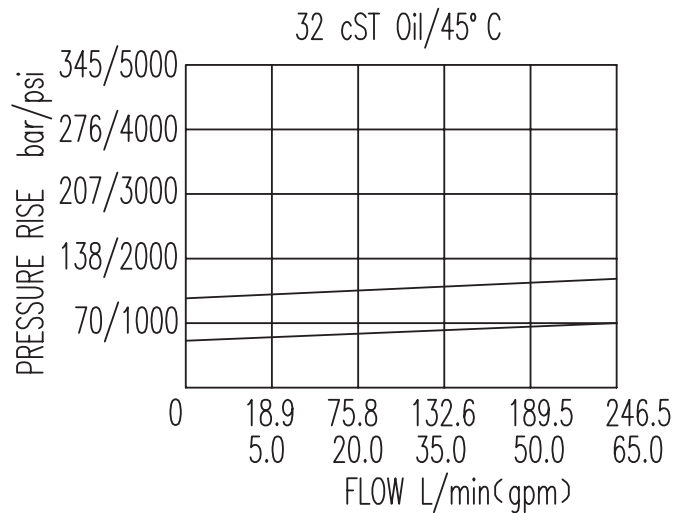
Temperature : -30~+110°C

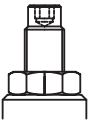
(Standard Buna Seals)

Cavity : T7-1

Installation torque : 62.6~73.4Nm

The valve blocks flow from ② to ① until 85% pressure is present at ②. With the continued increase pressure on ②, ② to ① began to overflow, until to the spring's maximum pressure.



X	ADJUSTMENTS	
03	Leakproof hex. and socket screw	

Y	SPRINGS			
	Press. range bar	Press. increase bar/turn	Standard setting bar	Cracking press. bar
05	18~78	14	70	55
10	43~120	32	100	83