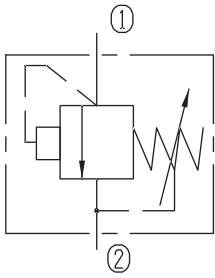


# Differential Area Relief Valves (Poppet-type)

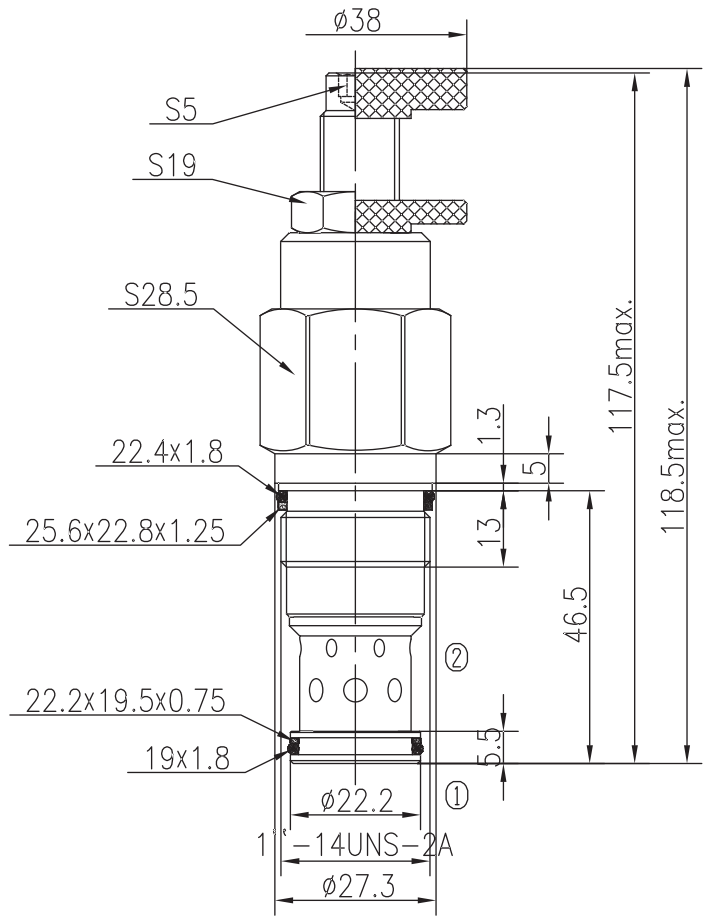


BCYF12-00/X.Y

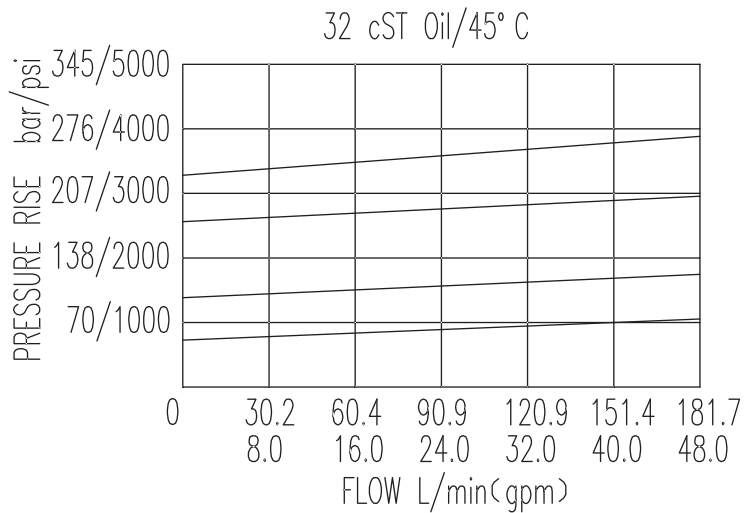


## Specifications:

Max working Pressure :	275bar
Flow Max :	200L/min
Internal Leakage :	<30ml/min
(75~85% of Setting Pressure at 60L/min)	
Filtration Of Oil :	25μm or better
Temperature :	-30~+110℃
	(Standard Buna Seals)
Cavity :	T-3A
Installation torque):	60~70Nm



The valve blocks flow from ① to ② until 85% pressure is present at ①. With the continued increase pressure on ①, ① to ② began to overflow, until to the spring's maximum pressure.



X	ADJUSTMENTS	
03	Leakproof hex. and socket screw	
05	Alum. Knob and Locking Nut	

Y	SPRINGS			
	Press. range bar	Press. increase bar/turn	Standard setting bar	Cracking press. bar
05	18~74	14	70	56
10	69~141	25	120	100
15	43~228	38	200	175
20	129~275	59	250	220